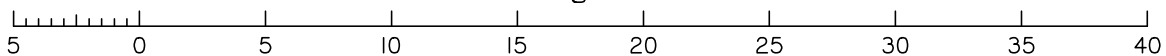


- ALLOTMENTS MAY HAVE BEEN TRIMMED, RESHAPED AND TOPSOIL RESPREAD. ANY EARTHWORKS OR FILL ASSOCIATED WITH THOSE WORKS IS NOT SHOWN AND HAS NOT BEEN SUBJECT TO ENGINEERING COMPACTION REQUIREMENTS. IT IS ANTICIPATED THE DEPTH OF SUCH WORKS WOULD NOT EXCEED 450mm, HOWEVER, ISOLATED AREAS GREATER THAN THAT DEPTH MAY OCCUR.
- IT IS THE PURCHASER'S RESPONSIBILITY TO ARRANGE THEIR OWN INDEPENDENT GEOTECHNICAL TESTING ON ANY ALLOTMENT TO DETERMINE FOUNDATION REQUIREMENTS PRIOR TO CONSTRUCTION.
- IT IS THE PURCHASER'S RESPONSIBILITY TO OBTAIN THE ACCURATE LOCATION OF SERVICES FROM THE LOCAL AUTHORITY.
- THE DIMENSIONS AND AREAS SHOWN ON THIS PLAN ARE SUBJECT TO FINAL COUNCIL SEALING APPROVAL AND REGISTRATION IN THE DEPARTMENT OF NATURAL RESOURCES AND MINES.
- EARTHWORKS FILL ON THE SUBJECT ALLOTMENT WILL BE UNDERTAKEN AND COMPACTED IN ACCORDANCE WITH THE PROVISIONS OF AS3798-2007 TABLES 5.1 AND 8.1 UNDER LEVEL 1 SUPERVISION.
- FUTURE LOTS ARE INDICATIVE ONLY AND ARE SUBJECT TO CHANGE AT THE DEVELOPER'S ABSOLUTE DISCRETION.

Scale 1:300 - Lengths are in Metres.



NOTE:

The dimensions and areas shown hereon are subject to field survey and also to the requirements of Council and any other authority which may have requirements under any relevant legislation.
Contour Interval 0.5 Metres.
See draft plan SP342576 for more information.
Refer to Brisbane City Council Application A006180943 for full details.
This note is an integral part of this plan.

DISCLOSURE PLAN

Description

PROPOSED LOT 1
LOTS 97, 98 & 125 on SP330675
LAND AT SUTTON PLACE
CANNON HILL
BRISBANE CITY COUNCIL

Scale in Metres.

1: 300 at A4

Norris Clarke & O'Brien Pty Ltd



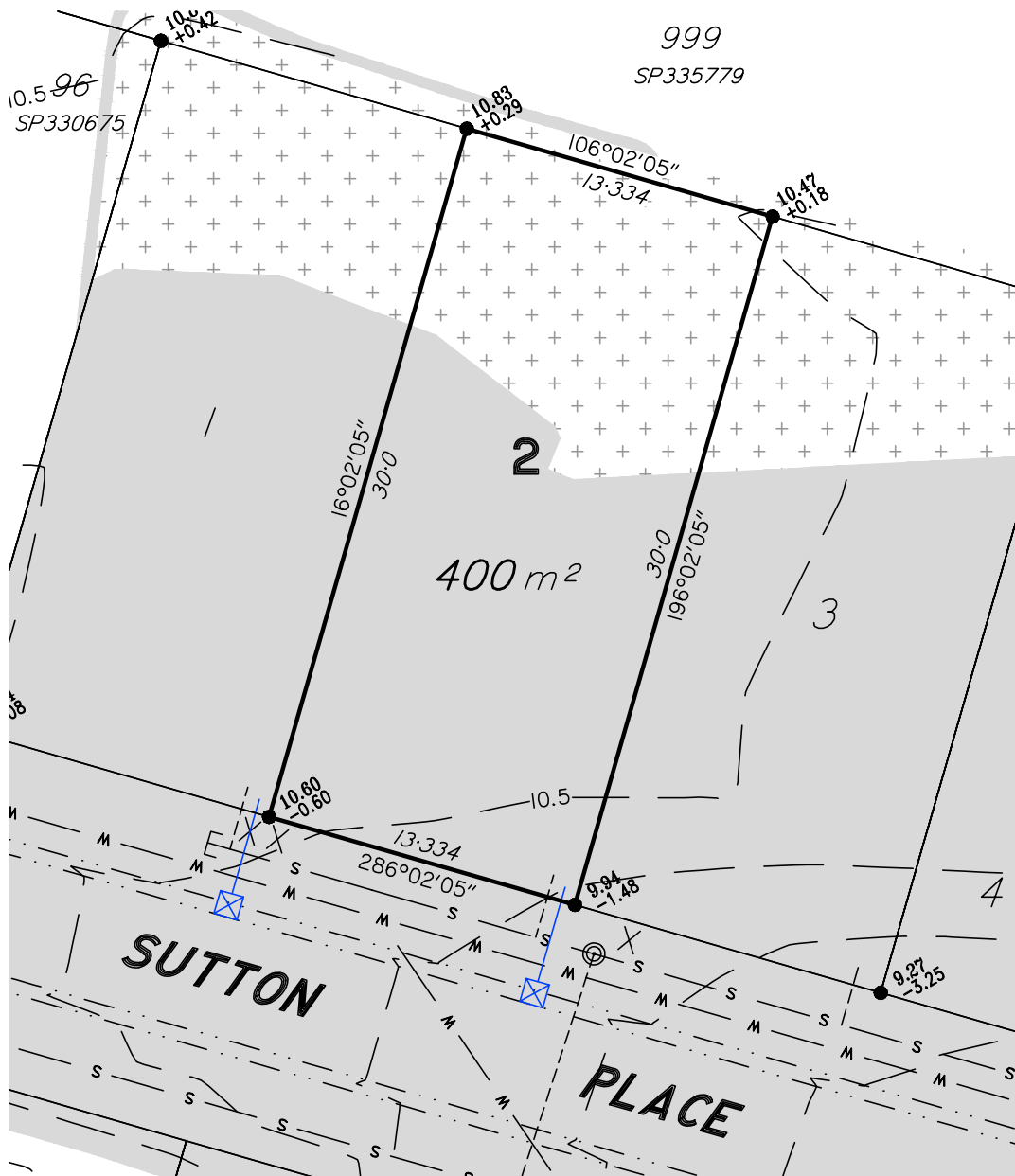
Licensed Surveyors
Town Planners
Development Consultants

Level 1 - Aldi Centre, 12 Bishop Street
Kelvin Grove QLD 4059
ph: 07 3012 0000 fax: 07 3012 0099
email: info@ncob.com.au
ACN 056 870 770 ABN 15 056 870 770

COMP.FILE
6622DP_S5A.DWG

ISSUE:
A

Date 23/08/2023 Ref. 11378DP-1

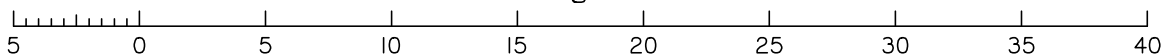


LEGEND

- 18 — Design Contours
- Area of Cut
- Area of Fill
- 10.123
+0.120
- + = Amount of Fill
- = Amount of Cut
- FSL = Design Surface Level
- S — Batter/Bank
- □ — Retaining Wall
- S — Sewer Main
- ⊙ — Sewer Manhole
- — — Sewer Connection
- D — Stormwater Main
- D — Roofwater Pipe
- ⊙ — Stormwater Manhole
- ⊙ — Stormwater Gully Pit
- ⊙ — Roofwater Pit
- ⊙ — RW Kerb Adaptor
- W — Water Reticulation
- X — Water Meter Location

1. ALLOTMENTS MAY HAVE BEEN TRIMMED, RESHAPED AND TOPSOIL RESPREAD. ANY EARTHWORKS OR FILL ASSOCIATED WITH THOSE WORKS IS NOT SHOWN AND HAS NOT BEEN SUBJECT TO ENGINEERING COMPACTION REQUIREMENTS. IT IS ANTICIPATED THE DEPTH OF SUCH WORKS WOULD NOT EXCEED 450mm, HOWEVER, ISOLATED AREAS GREATER THAN THAT DEPTH MAY OCCUR.
2. IT IS THE PURCHASER'S RESPONSIBILITY TO ARRANGE THEIR OWN INDEPENDENT GEOTECHNICAL TESTING ON ANY ALLOTMENT TO DETERMINE FOUNDATION REQUIREMENTS PRIOR TO CONSTRUCTION.
3. IT IS THE PURCHASER'S RESPONSIBILITY TO OBTAIN THE ACCURATE LOCATION OF SERVICES FROM THE LOCAL AUTHORITY.
4. THE DIMENSIONS AND AREAS SHOWN ON THIS PLAN ARE SUBJECT TO FINAL COUNCIL SEALING APPROVAL AND REGISTRATION IN THE DEPARTMENT OF NATURAL RESOURCES AND MINES.
5. EARTHWORKS FILL ON THE SUBJECT ALLOTMENT WILL BE UNDERTAKEN AND COMPACTED IN ACCORDANCE WITH THE PROVISIONS OF AS3798-2007 TABLES 5.1 AND 8.1 UNDER LEVEL 1 SUPERVISION.
6. FUTURE LOTS ARE INDICATIVE ONLY AND ARE SUBJECT TO CHANGE AT THE DEVELOPER'S ABSOLUTE DISCRETION.

Scale 1:300 – Lengths are in Metres.



NOTE:

The dimensions and areas shown hereon are subject to field survey and also to the requirements of Council and any other authority which may have requirements under any relevant legislation.
Contour Interval 0.5 Metres.
See draft plan SP342576 for more information.
Refer to Brisbane City Council Application A006180943 for full details.
This note is an integral part of this plan.

DISCLOSURE PLAN

Description

PROPOSED LOT 2
LOTS 97, 98 & 125 on SP330675
LAND AT SUTTON PLACE
CANNON HILL
BRISBANE CITY COUNCIL

Scale in Metres.

1: 300 at A4

Norris Clarke & O'Brien Pty Ltd



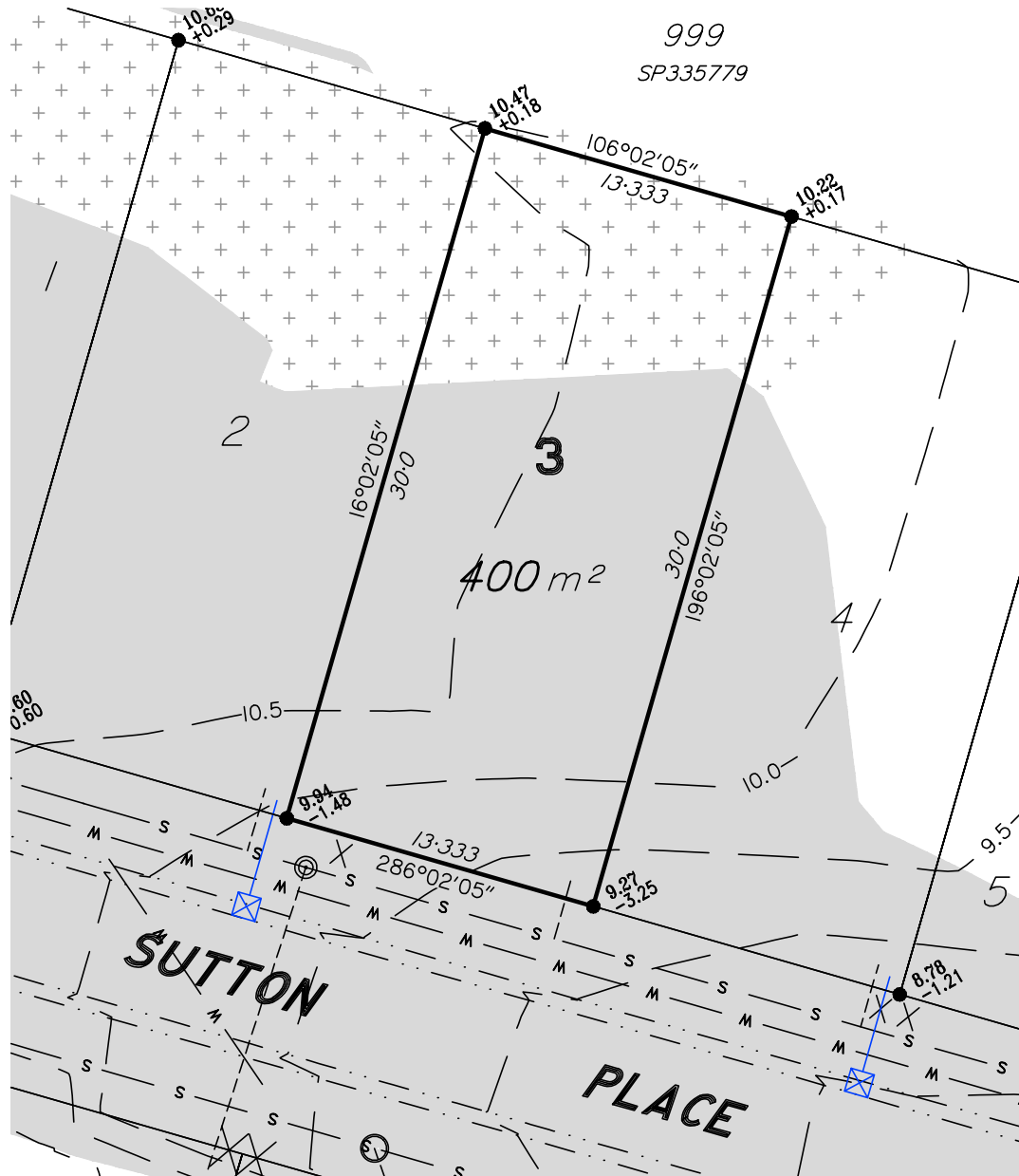
Licensed Surveyors
Town Planners
Development Consultants

Level 1 - Aldi Centre, 12 Bishop Street
Kelvin Grove QLD 4059
ph: 07 3012 0000 fax: 07 3012 0099
email: info@ncob.com.au
ACN 056 870 770 ABN 15 056 870 770

COMP.FILE
6622DP_S5A.DWG

ISSUE:
A

Date 23/08/2023 Ref. 11378DP-2

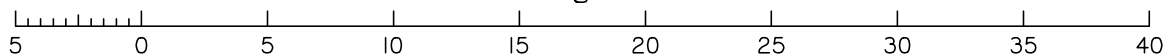


LEGEND

- 18 — Design Contours
- Area of Cut
- Area of Fill
- 10.123
+0.120 + = Amount of Fill
- = Amount of Cut
FSL = Design Surface Level
- Batter/Bank
- Retaining Wall
- S Sewer Main
- Sewer Manhole
- Sewer Connection
- D Stormwater Main
- D Roofwater Pipe
- Stormwater Manhole
- Stormwater Gully Pit
- Roofwater Pit
- RW Kerb Adaptor
- W Water Reticulation
- X Water Meter Location

1. ALLOTMENTS MAY HAVE BEEN TRIMMED, RESHAPED AND TOPSOIL RESPREAD. ANY EARTHWORKS OR FILL ASSOCIATED WITH THOSE WORKS IS NOT SHOWN AND HAS NOT BEEN SUBJECT TO ENGINEERING COMPACTION REQUIREMENTS. IT IS ANTICIPATED THE DEPTH OF SUCH WORKS WOULD NOT EXCEED 450mm, HOWEVER, ISOLATED AREAS GREATER THAN THAT DEPTH MAY OCCUR.
2. IT IS THE PURCHASER'S RESPONSIBILITY TO ARRANGE THEIR OWN INDEPENDENT GEOTECHNICAL TESTING ON ANY ALLOTMENT TO DETERMINE FOUNDATION REQUIREMENTS PRIOR TO CONSTRUCTION.
3. IT IS THE PURCHASER'S RESPONSIBILITY TO OBTAIN THE ACCURATE LOCATION OF SERVICES FROM THE LOCAL AUTHORITY.
4. THE DIMENSIONS AND AREAS SHOWN ON THIS PLAN ARE SUBJECT TO FINAL COUNCIL SEALING APPROVAL AND REGISTRATION IN THE DEPARTMENT OF NATURAL RESOURCES AND MINES.
5. EARTHWORKS FILL ON THE SUBJECT ALLOTMENT WILL BE UNDERTAKEN AND COMPACTED IN ACCORDANCE WITH THE PROVISIONS OF AS3798-2007 TABLES 5.1 AND 8.1 UNDER LEVEL 1 SUPERVISION.
6. FUTURE LOTS ARE INDICATIVE ONLY AND ARE SUBJECT TO CHANGE AT THE DEVELOPER'S ABSOLUTE DISCRETION.

Scale 1:300 – Lengths are in Metres.



NOTE:

The dimensions and areas shown hereon are subject to field survey and also to the requirements of Council and any other authority which may have requirements under any relevant legislation.
Contour Interval 0.5 Metres.
See draft plan SP342576 for more information.
Refer to Brisbane City Council Application A006180943 for full details.
This note is an integral part of this plan.

DISCLOSURE PLAN

Description

PROPOSED LOT 3
LOTS 97, 98 & 125 on SP330675
LAND AT SUTTON PLACE
CANNON HILL
BRISBANE CITY COUNCIL

Scale in Metres.

1: 300 at A4

Norris Clarke & O'Brien Pty Ltd



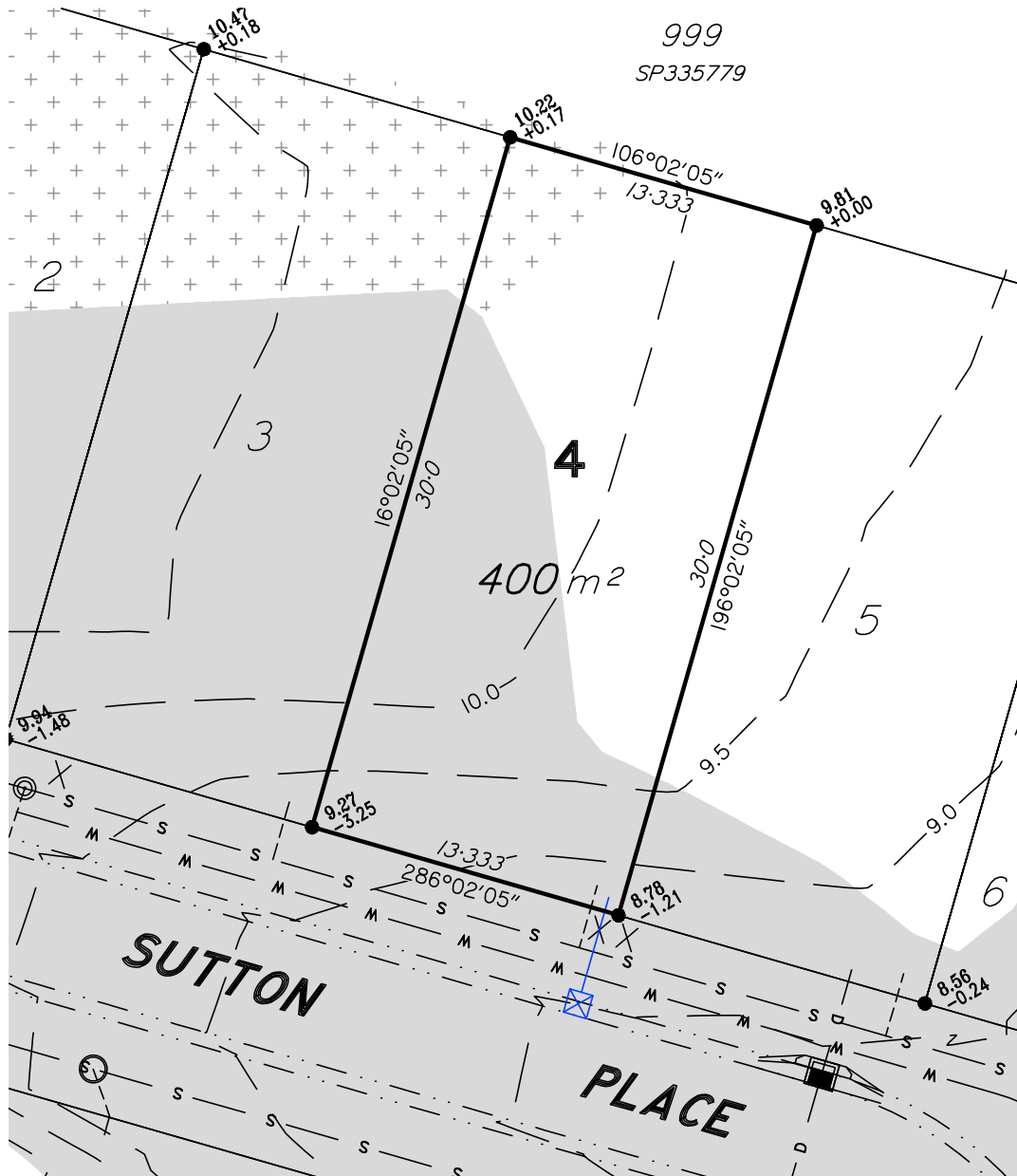
Licensed Surveyors
Town Planners
Development Consultants

Level 1 - Aldi Centre, 12 Bishop Street
Kelvin Grove QLD 4059
ph: 07 3012 0000 fax: 07 3012 0099
email: info@ncob.com.au
ACN 056 870 770 ABN 15 056 870 770

COMP.FILE
6622DP_S5A.DWG

ISSUE: **B**

Date 23/08/2023 Ref. 11378DP-3

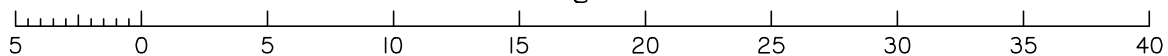


LEGEND

- 18 — Design Contours
- Area of Cut
- Area of Fill
- 10.123
+0.120
+ = Amount of Fill
- = Amount of Cut
FSL = Design Surface Level
- S — Batter/Bank
- □ — Retaining Wall
- S — Sewer Main
- ○ — Sewer Manhole
- — — Sewer Connection
- D — Stormwater Main
- D — Roofwater Pipe
- ○ — Stormwater Manhole
- — Stormwater Gully Pit
- — Roofwater Pit
- — RW Kerb Adaptor
- W — Water Reticulation
- X Water Meter Location

1. ALLOTMENTS MAY HAVE BEEN TRIMMED, RESHAPED AND TOPSOIL RESPREAD. ANY EARTHWORKS OR FILL ASSOCIATED WITH THOSE WORKS IS NOT SHOWN AND HAS NOT BEEN SUBJECT TO ENGINEERING COMPACTION REQUIREMENTS. IT IS ANTICIPATED THE DEPTH OF SUCH WORKS WOULD NOT EXCEED 450mm, HOWEVER, ISOLATED AREAS GREATER THAN THAT DEPTH MAY OCCUR.
2. IT IS THE PURCHASER'S RESPONSIBILITY TO ARRANGE THEIR OWN INDEPENDENT GEOTECHNICAL TESTING ON ANY ALLOTMENT TO DETERMINE FOUNDATION REQUIREMENTS PRIOR TO CONSTRUCTION.
3. IT IS THE PURCHASER'S RESPONSIBILITY TO OBTAIN THE ACCURATE LOCATION OF SERVICES FROM THE LOCAL AUTHORITY.
4. THE DIMENSIONS AND AREAS SHOWN ON THIS PLAN ARE SUBJECT TO FINAL COUNCIL SEALING APPROVAL AND REGISTRATION IN THE DEPARTMENT OF NATURAL RESOURCES AND MINES.
5. EARTHWORKS FILL ON THE SUBJECT ALLOTMENT WILL BE UNDERTAKEN AND COMPACTED IN ACCORDANCE WITH THE PROVISIONS OF AS3798-2007 TABLES 5.1 AND 8.1 UNDER LEVEL 1 SUPERVISION.
6. FUTURE LOTS ARE INDICATIVE ONLY AND ARE SUBJECT TO CHANGE AT THE DEVELOPER'S ABSOLUTE DISCRETION.

Scale 1:300 – Lengths are in Metres.



NOTE:

The dimensions and areas shown hereon are subject to field survey and also to the requirements of Council and any other authority which may have requirements under any relevant legislation.
Contour Interval 0.5 Metres.
See draft plan SP342576 for more information.
Refer to Brisbane City Council Application A006180943 for full details.
This note is an integral part of this plan.

DISCLOSURE PLAN

Description

PROPOSED LOT 4
LOTS 97, 98 & 125 on SP330675
LAND AT SUTTON PLACE
CANNON HILL
BRISBANE CITY COUNCIL

Scale in Metres.

1: 300 at A4

Norris Clarke & O'Brien Pty Ltd



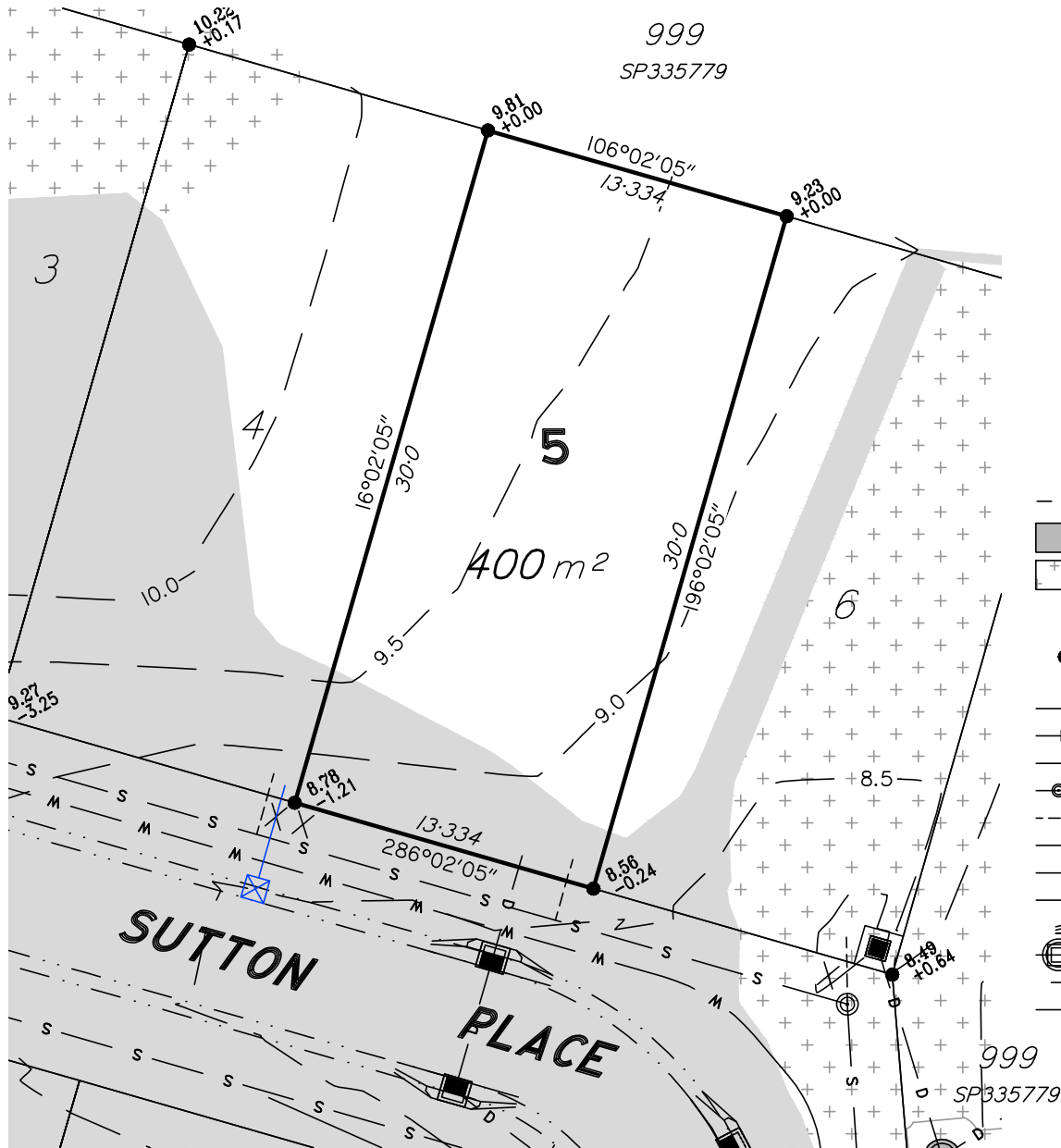
Licensed Surveyors
Town Planners
Development Consultants

Level 1 - Aldi Centre, 12 Bishop Street
Kelvin Grove QLD 4059
ph: 07 3012 0000 fax: 07 3012 0099
email: info@ncob.com.au
ACN 056 870 770 ABN 15 056 870 770

COMP.FILE
6622DP_S5A.DWG

ISSUE:
A

Date 23/08/2023 Ref. 11378DP-4

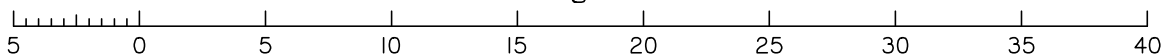


LEGEND

- 18 — Design Contours
- Area of Cut
- Area of Fill
- + = Amount of Fill
- = Amount of Cut
- FSL = Design Surface Level
- Batter/Bank
- Retaining Wall
- Sewer Main
- Sewer Manhole
- Sewer Connection
- Stormwater Main
- Roofwater Pipe
- Stormwater Manhole
- Stormwater Gully Pit
- Roofwater Pit
- RW Kerb Adaptor
- Water Reticulation
- Water Meter Location

1. ALLOTMENTS MAY HAVE BEEN TRIMMED, RESHAPED AND TOPSOIL RESPREAD. ANY EARTHWORKS OR FILL ASSOCIATED WITH THOSE WORKS IS NOT SHOWN AND HAS NOT BEEN SUBJECT TO ENGINEERING COMPACTION REQUIREMENTS. IT IS ANTICIPATED THE DEPTH OF SUCH WORKS WOULD NOT EXCEED 450mm, HOWEVER, ISOLATED AREAS GREATER THAN THAT DEPTH MAY OCCUR.
2. IT IS THE PURCHASER'S RESPONSIBILITY TO ARRANGE THEIR OWN INDEPENDENT GEOTECHNICAL TESTING ON ANY ALLOTMENT TO DETERMINE FOUNDATION REQUIREMENTS PRIOR TO CONSTRUCTION.
3. IT IS THE PURCHASER'S RESPONSIBILITY TO OBTAIN THE ACCURATE LOCATION OF SERVICES FROM THE LOCAL AUTHORITY.
4. THE DIMENSIONS AND AREAS SHOWN ON THIS PLAN ARE SUBJECT TO FINAL COUNCIL SEALING APPROVAL AND REGISTRATION IN THE DEPARTMENT OF NATURAL RESOURCES AND MINES.
5. EARTHWORKS FILL ON THE SUBJECT ALLOTMENT WILL BE UNDERTAKEN AND COMPACTED IN ACCORDANCE WITH THE PROVISIONS OF AS3798-2007 TABLES 5.1 AND 8.1 UNDER LEVEL 1 SUPERVISION.
6. FUTURE LOTS ARE INDICATIVE ONLY AND ARE SUBJECT TO CHANGE AT THE DEVELOPER'S ABSOLUTE DISCRETION.

Scale 1:300 – Lengths are in Metres.



NOTE:

The dimensions and areas shown hereon are subject to field survey and also to the requirements of Council and any other authority which may have requirements under any relevant legislation.
Contour Interval 0.5 Metres.
See draft plan SP342576 for more information.
Refer to Brisbane City Council Application A006180943 for full details.
This note is an integral part of this plan.

DISCLOSURE PLAN

Description

PROPOSED LOT 5
LOTS 97, 98 & 125 on SP330675
LAND AT SUTTON PLACE
CANNON HILL
BRISBANE CITY COUNCIL

Scale in Metres.

1: 300 at A4

Norris Clarke & O'Brien Pty Ltd



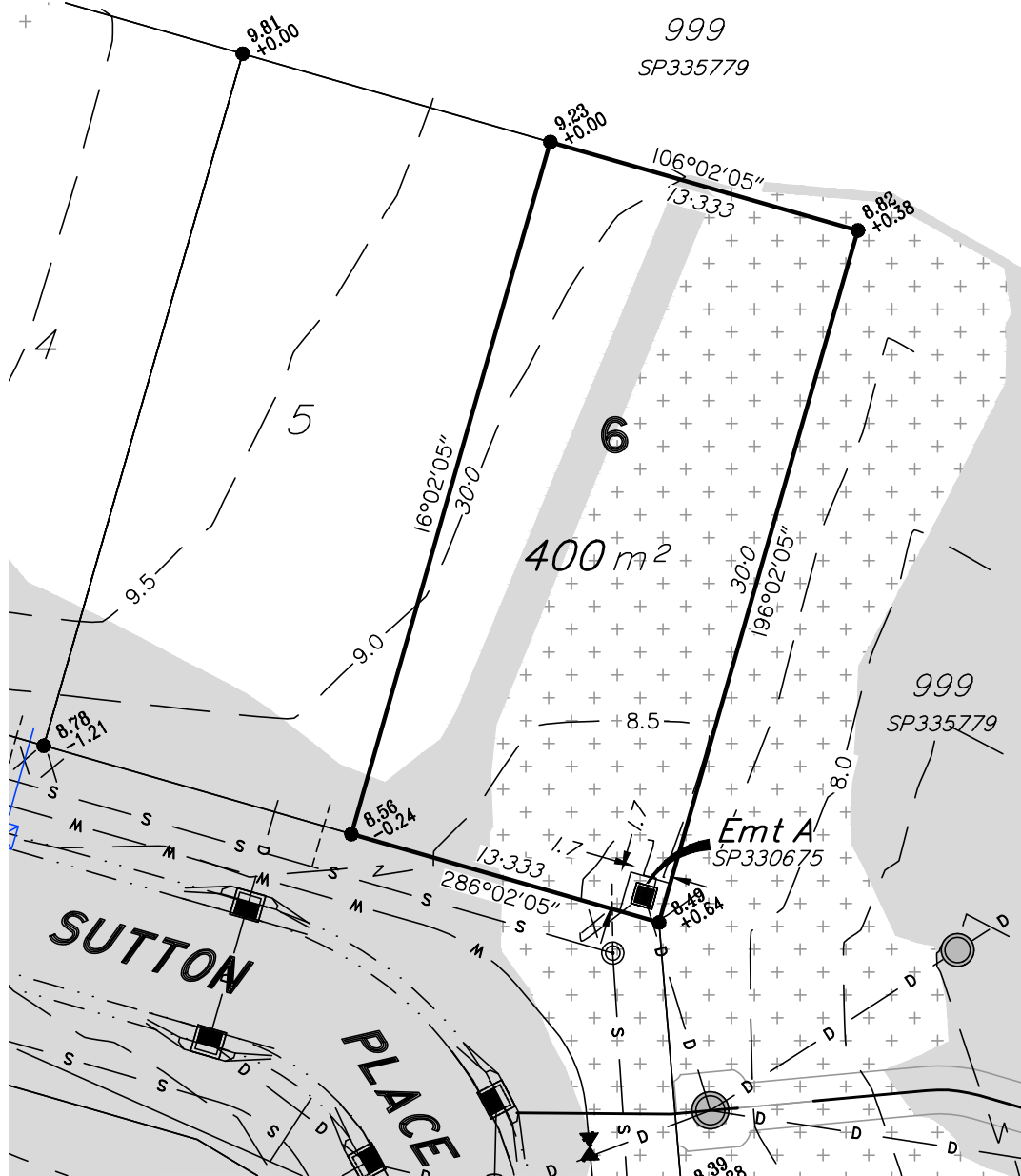
Licensed Surveyors
Town Planners
Development Consultants

Level 1 - Aldi Centre, 12 Bishop Street
Kelvin Grove QLD 4059
ph: 07 3012 0000 fax: 07 3012 0099
email: info@ncob.com.au
ACN 056 870 770 ABN 15 056 870 770

COMP.FILE
6622DP_S5A.DWG

ISSUE:
A

Date 23/08/2023 Ref. 11378DP-5

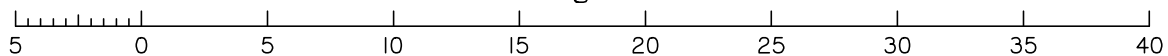


LEGEND

- 18 — Design Contours
- Area of Cut
- Area of Fill
- 10.123
+0.120
- + = Amount of Fill
- = Amount of Cut
FSL = Design Surface Level
- S — Batter/Bank
- □ — Retaining Wall
- S — Sewer Main
- ○ — Sewer Manhole
- — — Sewer Connection
- D — Stormwater Main
- D — Roofwater Pipe
- ○ — Stormwater Manhole
- — — Stormwater Gully Pit
- □ — Roofwater Pit
- □ — RW Kerb Adaptor
- W — Water Reticulation
- X Water Meter Location

1. ALLOTMENTS MAY HAVE BEEN TRIMMED, RESHAPED AND TOPSOIL RESPREAD. ANY EARTHWORKS OR FILL ASSOCIATED WITH THOSE WORKS IS NOT SHOWN AND HAS NOT BEEN SUBJECT TO ENGINEERING COMPACTION REQUIREMENTS. IT IS ANTICIPATED THE DEPTH OF SUCH WORKS WOULD NOT EXCEED 450mm, HOWEVER, ISOLATED AREAS GREATER THAN THAT DEPTH MAY OCCUR.
2. IT IS THE PURCHASER'S RESPONSIBILITY TO ARRANGE THEIR OWN INDEPENDENT GEOTECHNICAL TESTING ON ANY ALLOTMENT TO DETERMINE FOUNDATION REQUIREMENTS PRIOR TO CONSTRUCTION.
3. IT IS THE PURCHASER'S RESPONSIBILITY TO OBTAIN THE ACCURATE LOCATION OF SERVICES FROM THE LOCAL AUTHORITY.
4. THE DIMENSIONS AND AREAS SHOWN ON THIS PLAN ARE SUBJECT TO FINAL COUNCIL SEALING APPROVAL AND REGISTRATION IN THE DEPARTMENT OF NATURAL RESOURCES AND MINES.
5. EARTHWORKS FILL ON THE SUBJECT ALLOTMENT WILL BE UNDERTAKEN AND COMPACTED IN ACCORDANCE WITH THE PROVISIONS OF AS3798-2007 TABLES 5.1 AND 8.1 UNDER LEVEL 1 SUPERVISION.
6. FUTURE LOTS ARE INDICATIVE ONLY AND ARE SUBJECT TO CHANGE AT THE DEVELOPER'S ABSOLUTE DISCRETION.

Scale 1:300 – Lengths are in Metres.



NOTE:

The dimensions and areas shown hereon are subject to field survey and also to the requirements of Council and any other authority which may have requirements under any relevant legislation.
Contour Interval 0.5 Metres.
See draft plan SP342576 for more information.
Refer to Brisbane City Council Application A006180943 for full details.
This note is an integral part of this plan.

DISCLOSURE PLAN

Description

PROPOSED LOT 6
LOTS 97, 98 & 125 on SP330675
LAND AT SUTTON PLACE
CANNON HILL
BRISBANE CITY COUNCIL

Scale in Metres.

1: 300 at A4

Norris Clarke & O'Brien Pty Ltd



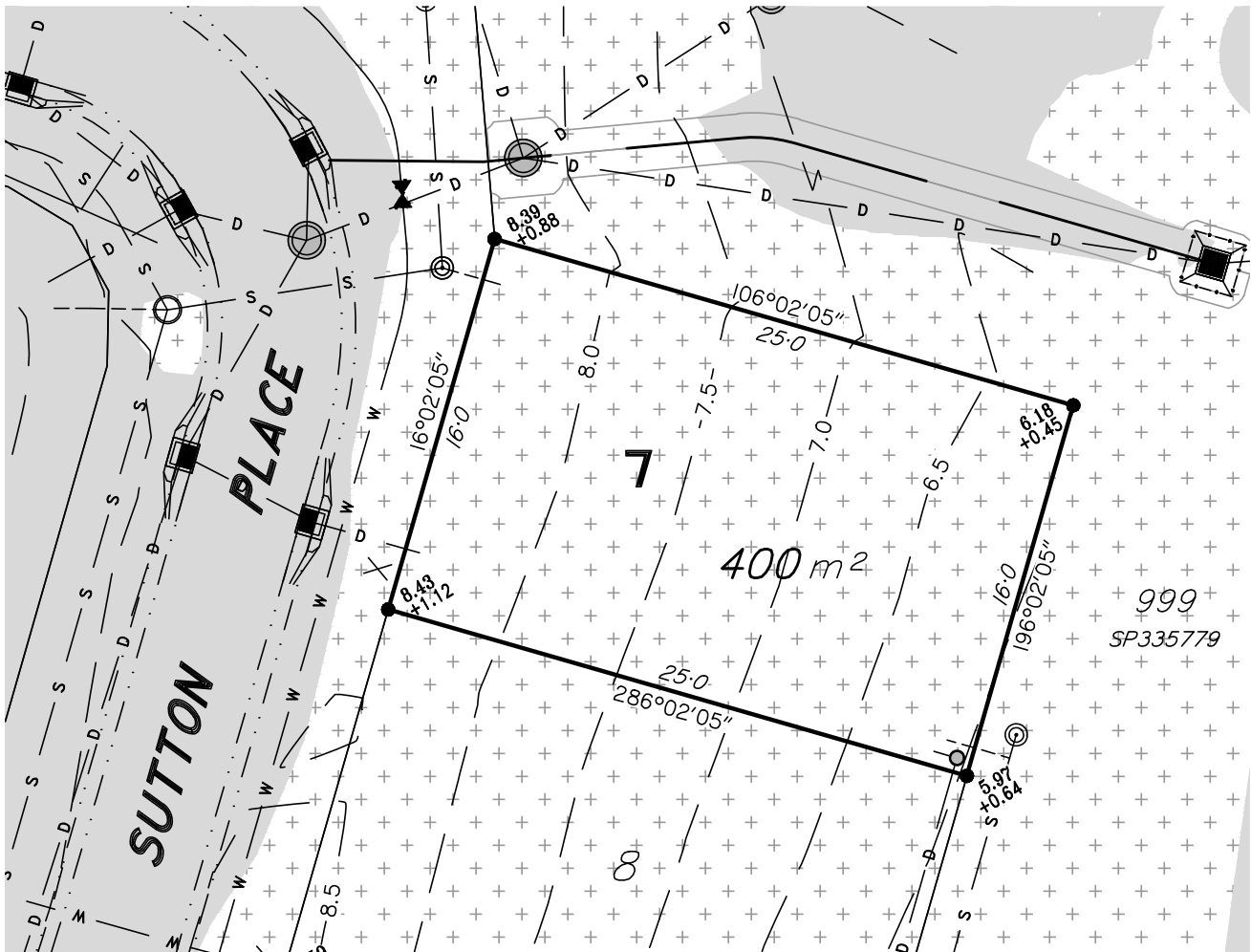
Licensed Surveyors
Town Planners
Development Consultants

Level 1 - Aldi Centre, 12 Bishop Street
Kelvin Grove QLD 4059
ph: 07 3012 0000 fax: 07 3012 0099
email: info@ncob.com.au
ACN 056 870 770 ABN 15 056 870 770

COMP.FILE
6622DP_S5A.DWG

ISSUE:
A

Date 23/08/2023 Ref. 11378DP-6

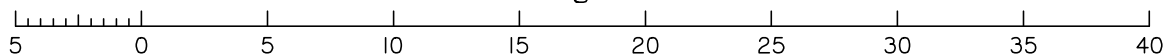


LEGEND

— 18 —	Design Contours	-----	Batter/Bank	— D —	Stormwater Main		Roofwater Pit
	Area of Cut	— □ —	Retaining Wall	— D —	Roofwater Pipe		RW Kerb Adaptor
	Area of Fill	— S —	Sewer Main		Stormwater Manhole	— W —	Water Reticulation
	FSL = Design Surface Level +/- = Amount of Cut / Fill		Sewer Manhole		Stormwater Gully Pit	X	Water Meter Location
		-----	Sewer Connection				

- ALLOTMENTS MAY HAVE BEEN TRIMMED, RESHAPED AND TOPSOIL RESPREAD. ANY EARTHWORKS OR FILL ASSOCIATED WITH THOSE WORKS IS NOT SHOWN AND HAS NOT BEEN SUBJECT TO ENGINEERING COMPACTION REQUIREMENTS. IT IS ANTICIPATED THE DEPTH OF SUCH WORKS WOULD NOT EXCEED 450mm, HOWEVER, ISOLATED AREAS GREATER THAN THAT DEPTH MAY OCCUR.
- IT IS THE PURCHASER'S RESPONSIBILITY TO ARRANGE THEIR OWN INDEPENDENT GEOTECHNICAL TESTING ON ANY ALLOTMENT TO DETERMINE FOUNDATION REQUIREMENTS PRIOR TO CONSTRUCTION.
- IT IS THE PURCHASER'S RESPONSIBILITY TO OBTAIN THE ACCURATE LOCATION OF SERVICES FROM THE LOCAL AUTHORITY.
- THE DIMENSIONS AND AREAS SHOWN ON THIS PLAN ARE SUBJECT TO FINAL COUNCIL SEALING APPROVAL AND REGISTRATION IN THE DEPARTMENT OF NATURAL RESOURCES AND MINES.
- EARTHWORKS FILL ON THE SUBJECT ALLOTMENT WILL BE UNDERTAKEN AND COMPACTED IN ACCORDANCE WITH THE PROVISIONS OF AS3798-2007 TABLES 5.1 AND 8.1 UNDER LEVEL 1 SUPERVISION.
- FUTURE LOTS ARE INDICATIVE ONLY AND ARE SUBJECT TO CHANGE AT THE DEVELOPER'S ABSOLUTE DISCRETION.

Scale 1:300 – Lengths are in Metres.



NOTE:

The dimensions and areas shown hereon are subject to field survey and also to the requirements of Council and any other authority which may have requirements under any relevant legislation.
 Contour Interval 0.5 Metres.
 See draft plan SP342577 for more information.
 Refer to Brisbane City Council Application A006181319 for full details.
 This note is an integral part of this plan.

DISCLOSURE PLAN

Description

PROPOSED LOT 7
LOT 126 on SP330675
LAND AT SUTTON PLACE
CANNON HILL
BRISBANE CITY COUNCIL

Scale in Metres.

1: 300 at A4

Norris Clarke & O'Brien Pty Ltd



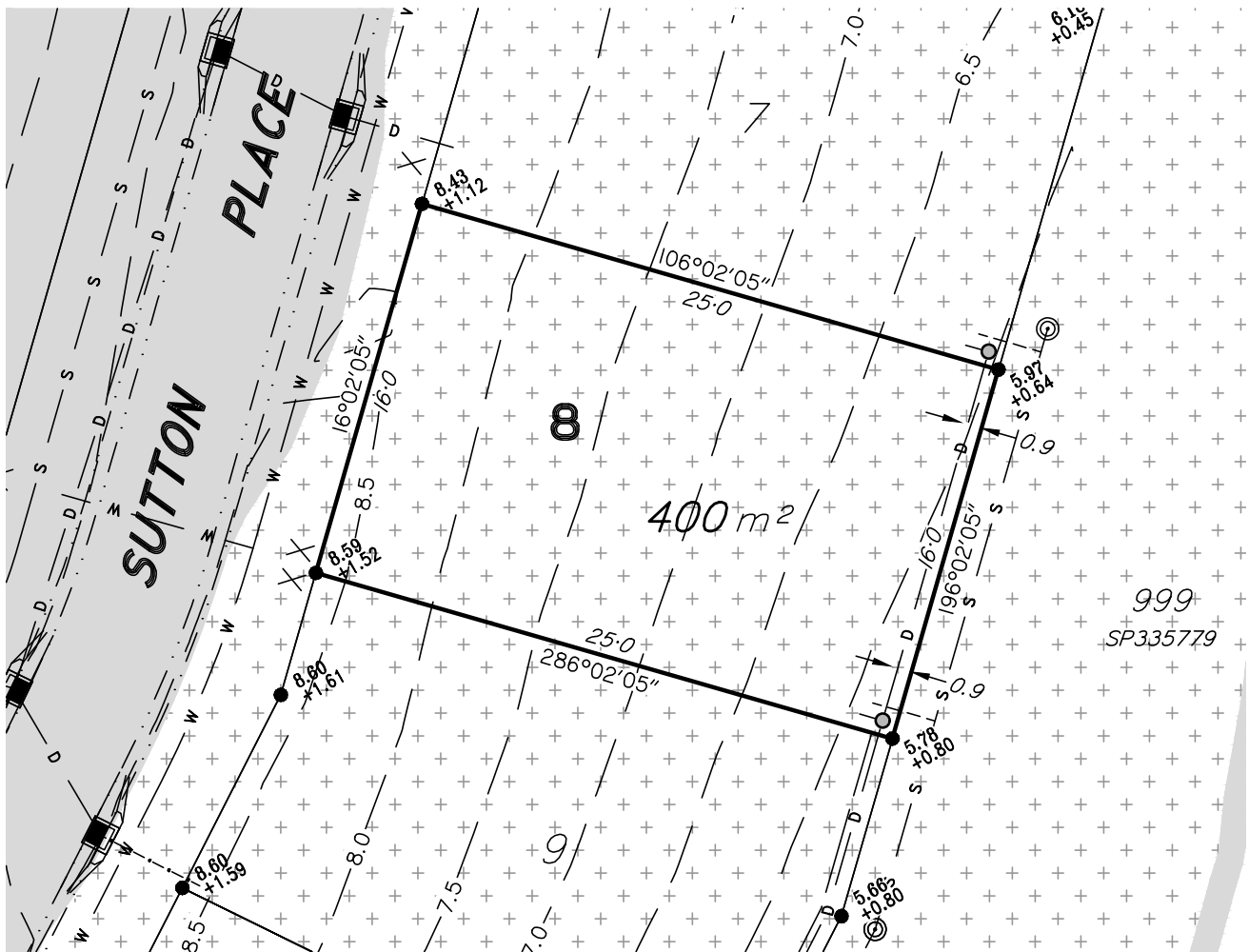
Licensed Surveyors
 Town Planners
 Development Consultants

Level 1 - Aldi Centre, 12 Bishop Street
 Kelvin Grove QLD 4059
 ph: 07 3012 0000 fax: 07 3012 0099
 email: info@ncob.com.au
 ACN 056 870 770 ABN 15 056 870 770

COMP.FILE
 6622DP_S5B.DWG

ISSUE:
A

Date 23/08/2023 Ref. 11379DP-7

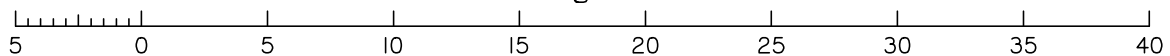


LEGEND

— 18 —	Design Contours	-----	Batter/Bank	— D —	Stormwater Main		Roofwater Pit
	Area of Cut	— □ —	Retaining Wall	— D —	Roofwater Pipe		RW Kerb Adaptor
	Area of Fill	— S —	Sewer Main		Stormwater Manhole	— W —	Water Reticulation
	FSL = Design Surface Level +/- = Amount of Cut / Fill		Sewer Manhole		Stormwater Gully Pit	X	Water Meter Location
		-----	Sewer Connection				

1. ALLOTMENTS MAY HAVE BEEN TRIMMED, RESHAPED AND TOPSOIL RESPREAD. ANY EARTHWORKS OR FILL ASSOCIATED WITH THOSE WORKS IS NOT SHOWN AND HAS NOT BEEN SUBJECT TO ENGINEERING COMPACTION REQUIREMENTS. IT IS ANTICIPATED THE DEPTH OF SUCH WORKS WOULD NOT EXCEED 450mm, HOWEVER, ISOLATED AREAS GREATER THAN THAT DEPTH MAY OCCUR.
2. IT IS THE PURCHASER'S RESPONSIBILITY TO ARRANGE THEIR OWN INDEPENDENT GEOTECHNICAL TESTING ON ANY ALLOTMENT TO DETERMINE FOUNDATION REQUIREMENTS PRIOR TO CONSTRUCTION.
3. IT IS THE PURCHASER'S RESPONSIBILITY TO OBTAIN THE ACCURATE LOCATION OF SERVICES FROM THE LOCAL AUTHORITY.
4. THE DIMENSIONS AND AREAS SHOWN ON THIS PLAN ARE SUBJECT TO FINAL COUNCIL SEALING APPROVAL AND REGISTRATION IN THE DEPARTMENT OF NATURAL RESOURCES AND MINES.
5. EARTHWORKS FILL ON THE SUBJECT ALLOTMENT WILL BE UNDERTAKEN AND COMPACTED IN ACCORDANCE WITH THE PROVISIONS OF AS3798-2007 TABLES 5.1 AND 8.1 UNDER LEVEL 1 SUPERVISION.
6. FUTURE LOTS ARE INDICATIVE ONLY AND ARE SUBJECT TO CHANGE AT THE DEVELOPER'S ABSOLUTE DISCRETION.

Scale 1:300 – Lengths are in Metres.



NOTE:

The dimensions and areas shown hereon are subject to field survey and also to the requirements of Council and any other authority which may have requirements under any relevant legislation.
Contour Interval 0.5 Metres.
See draft plan SP342577 for more information.
Refer to Brisbane City Council Application A006181319 for full details.
This note is an integral part of this plan.

DISCLOSURE PLAN

Description

PROPOSED LOT 8
LOT 126 on SP330675
LAND AT SUTTON PLACE
CANNON HILL
BRISBANE CITY COUNCIL

Scale in Metres.

1: 300 at A4

Norris Clarke & O'Brien Pty Ltd



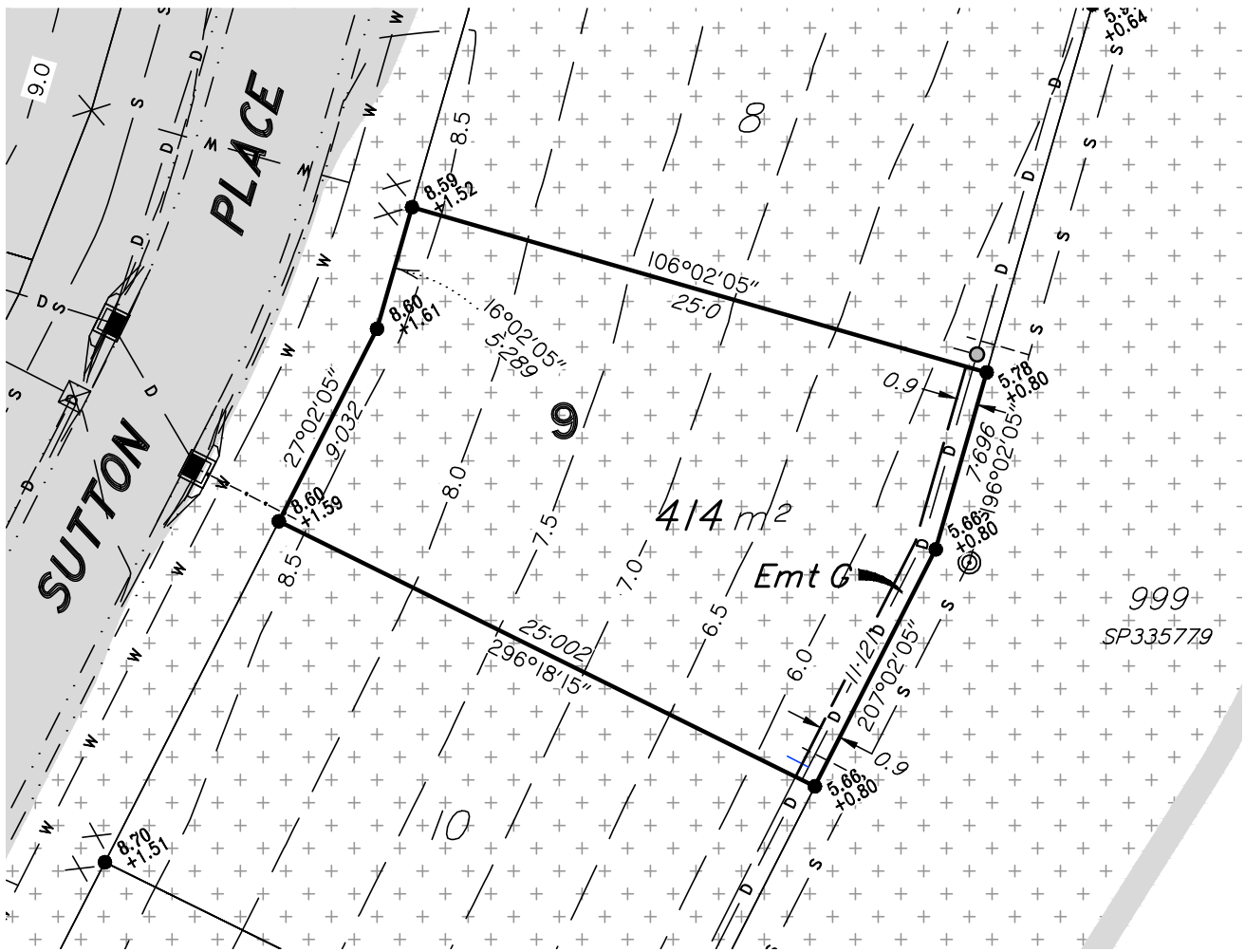
Licensed Surveyors
Town Planners
Development Consultants

Level 1 - Aldi Centre, 12 Bishop Street
Kelvin Grove QLD 4059
ph: 07 3012 0000 fax: 07 3012 0099
email: info@ncob.com.au
ACN 056 870 770 ABN 15 056 870 770

COMP.FILE
6622DP_S5B.DWG

ISSUE:
A

Date 23/08/2023 Ref. 11379DP-8

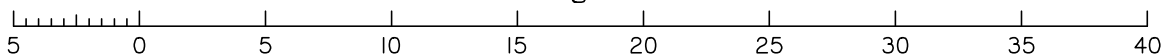


LEGEND

— 18 —	Design Contours	-----	Batter/Bank	— D —	Stormwater Main		Roofwater Pit
	Area of Cut	— □ —	Retaining Wall	— D —	Roofwater Pipe		RW Kerb Adaptor
	Area of Fill	— S —	Sewer Main		Stormwater Manhole	— W —	Water Reticulation
	FSL = Design Surface Level +/- = Amount of Cut / Fill		Sewer Manhole		Stormwater Gully Pit	X	Water Meter Location
		-----	Sewer Connection				

1. ALLOTMENTS MAY HAVE BEEN TRIMMED, RESHAPED AND TOPSOIL RESPREAD. ANY EARTHWORKS OR FILL ASSOCIATED WITH THOSE WORKS IS NOT SHOWN AND HAS NOT BEEN SUBJECT TO ENGINEERING COMPACTION REQUIREMENTS. IT IS ANTICIPATED THE DEPTH OF SUCH WORKS WOULD NOT EXCEED 450mm, HOWEVER, ISOLATED AREAS GREATER THAN THAT DEPTH MAY OCCUR.
2. IT IS THE PURCHASER'S RESPONSIBILITY TO ARRANGE THEIR OWN INDEPENDENT GEOTECHNICAL TESTING ON ANY ALLOTMENT TO DETERMINE FOUNDATION REQUIREMENTS PRIOR TO CONSTRUCTION.
3. IT IS THE PURCHASER'S RESPONSIBILITY TO OBTAIN THE ACCURATE LOCATION OF SERVICES FROM THE LOCAL AUTHORITY.
4. THE DIMENSIONS AND AREAS SHOWN ON THIS PLAN ARE SUBJECT TO FINAL COUNCIL SEALING APPROVAL AND REGISTRATION IN THE DEPARTMENT OF NATURAL RESOURCES AND MINES.
5. EARTHWORKS FILL ON THE SUBJECT ALLOTMENT WILL BE UNDERTAKEN AND COMPACTED IN ACCORDANCE WITH THE PROVISIONS OF AS3798-2007 TABLES 5.1 AND 8.1 UNDER LEVEL 1 SUPERVISION.
6. FUTURE LOTS ARE INDICATIVE ONLY AND ARE SUBJECT TO CHANGE AT THE DEVELOPER'S ABSOLUTE DISCRETION.

Scale 1:300 – Lengths are in Metres.



NOTE:

The dimensions and areas shown hereon are subject to field survey and also to the requirements of Council and any other authority which may have requirements under any relevant legislation.
Contour Interval 0.5 Metres.
See draft plan SP342577 for more information.
Refer to Brisbane City Council Application A006181319 for full details.
This note is an integral part of this plan.

DISCLOSURE PLAN

Description

PROPOSED LOT 9
LOT 126 on SP330675
LAND AT SUTTON PLACE
CANNON HILL
BRISBANE CITY COUNCIL

Scale in Metres.

1: 300 at A4

Norris Clarke & O'Brien Pty Ltd



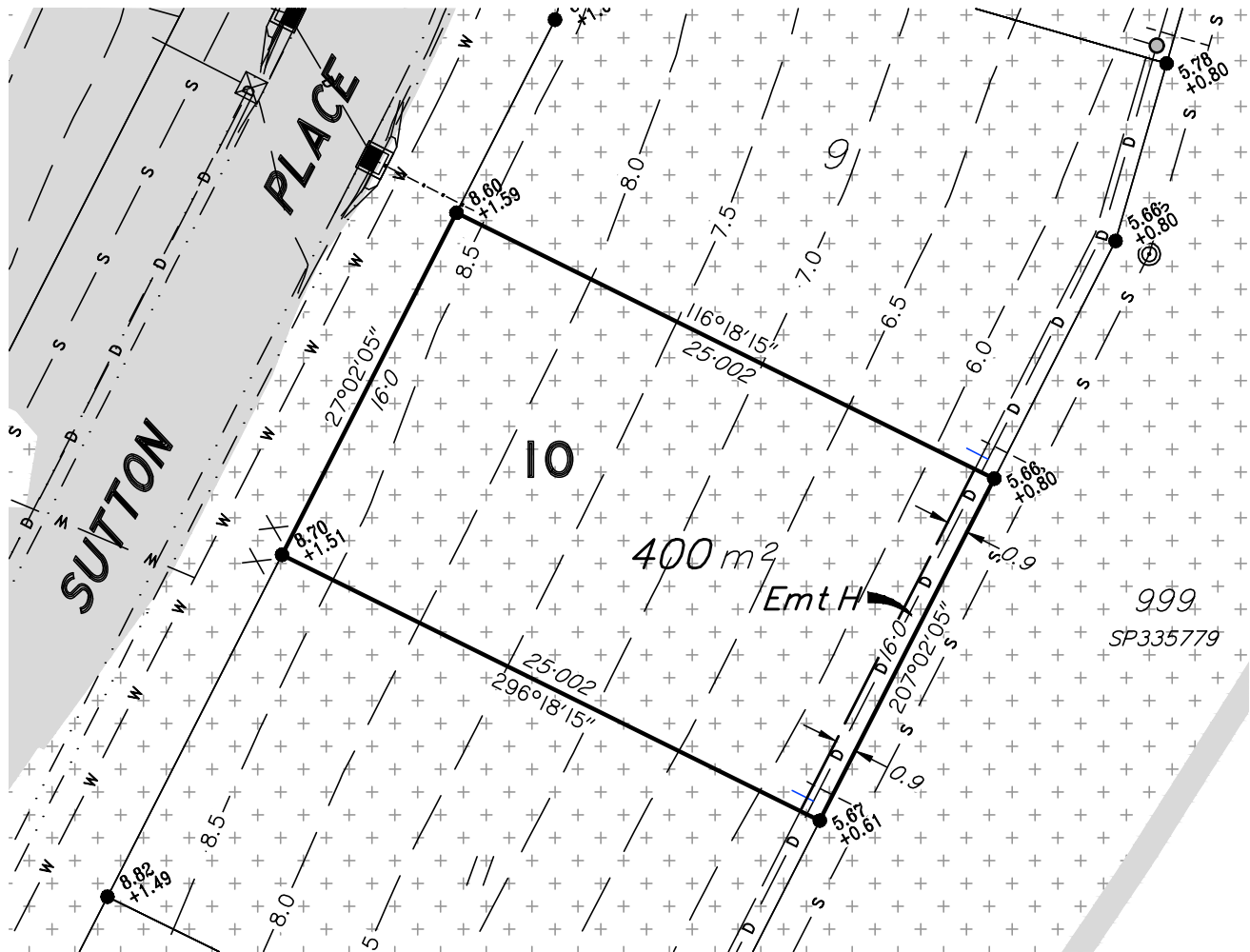
Licensed Surveyors
Town Planners
Development Consultants

Level 1 - Aldi Centre, 12 Bishop Street
Kelvin Grove QLD 4059
ph: 07 3012 0000 fax: 07 3012 0099
email: info@ncob.com.au
ACN 056 870 770 ABN 15 056 870 770

COMP.FILE
6622DP_S5B.DWG

ISSUE:
A

Date 23/08/2023 Ref. 11379DP-9

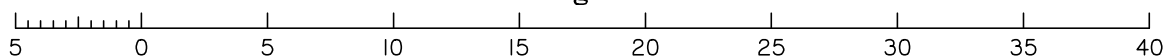


LEGEND

— 18 —	Design Contours	-----	Batter/Bank	— D —	Stormwater Main		Roofwater Pit
	Area of Cut	— □ —	Retaining Wall	— D —	Roofwater Pipe		RW Kerb Adaptor
	Area of Fill	— S —	Sewer Main		Stormwater Manhole	— W —	Water Reticulation
	FSL = Design Surface Level +/- = Amount of Cut / Fill		Sewer Manhole		Stormwater Gully Pit	X	Water Meter Location
		-----	Sewer Connection				

1. ALLOTMENTS MAY HAVE BEEN TRIMMED, RESHAPED AND TOPSOIL RESPREAD. ANY EARTHWORKS OR FILL ASSOCIATED WITH THOSE WORKS IS NOT SHOWN AND HAS NOT BEEN SUBJECT TO ENGINEERING COMPACTION REQUIREMENTS. IT IS ANTICIPATED THE DEPTH OF SUCH WORKS WOULD NOT EXCEED 450mm, HOWEVER, ISOLATED AREAS GREATER THAN THAT DEPTH MAY OCCUR.
2. IT IS THE PURCHASER'S RESPONSIBILITY TO ARRANGE THEIR OWN INDEPENDENT GEOTECHNICAL TESTING ON ANY ALLOTMENT TO DETERMINE FOUNDATION REQUIREMENTS PRIOR TO CONSTRUCTION.
3. IT IS THE PURCHASER'S RESPONSIBILITY TO OBTAIN THE ACCURATE LOCATION OF SERVICES FROM THE LOCAL AUTHORITY.
4. THE DIMENSIONS AND AREAS SHOWN ON THIS PLAN ARE SUBJECT TO FINAL COUNCIL SEALING APPROVAL AND REGISTRATION IN THE DEPARTMENT OF NATURAL RESOURCES AND MINES.
5. EARTHWORKS FILL ON THE SUBJECT ALLOTMENT WILL BE UNDERTAKEN AND COMPACTED IN ACCORDANCE WITH THE PROVISIONS OF AS3798-2007 TABLES 5.1 AND 8.1 UNDER LEVEL 1 SUPERVISION.
6. FUTURE LOTS ARE INDICATIVE ONLY AND ARE SUBJECT TO CHANGE AT THE DEVELOPER'S ABSOLUTE DISCRETION.

Scale 1:300 – Lengths are in Metres.



NOTE:

The dimensions and areas shown hereon are subject to field survey and also to the requirements of Council and any other authority which may have requirements under any relevant legislation.
Contour Interval 0.5 Metres.
See draft plan SP342577 for more information.
Refer to Brisbane City Council Application A006181319 for full details.
This note is an integral part of this plan.

DISCLOSURE PLAN

Description

PROPOSED LOT 10
LOT 126 on SP330675
LAND AT SUTTON PLACE
CANNON HILL
BRISBANE CITY COUNCIL

Scale in Metres.

1: 300 at A4

Norris Clarke & O'Brien Pty Ltd



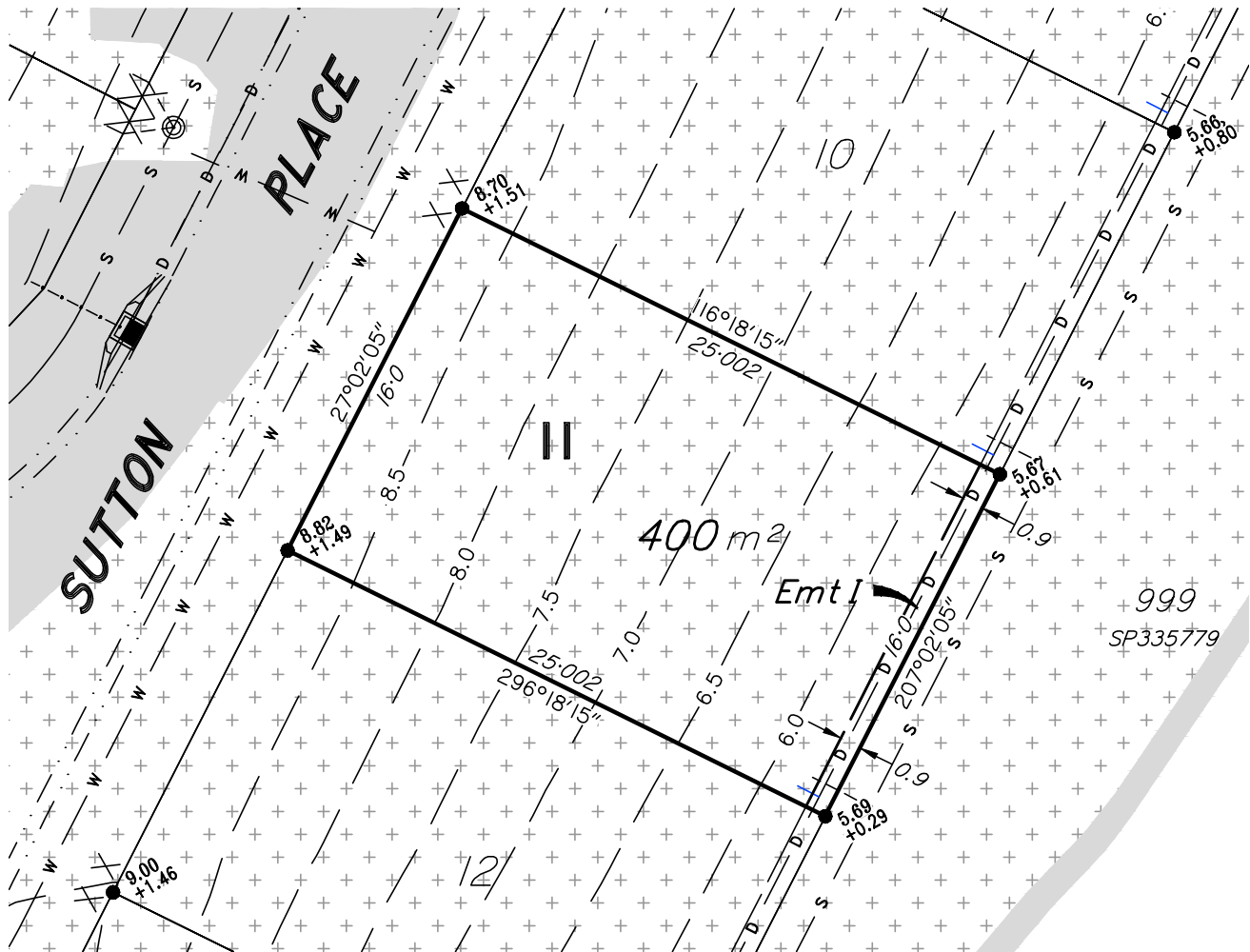
Licensed Surveyors
Town Planners
Development Consultants

Level 1 - Aldi Centre, 12 Bishop Street
Kelvin Grove QLD 4059
ph: 07 3012 0000 fax: 07 3012 0099
email: info@ncob.com.au
ACN 056 870 770 ABN 15 056 870 770

COMP.FILE
6622DP_S5B.DWG

ISSUE:
A

Date 23/08/2023 Ref. 11379DP-10

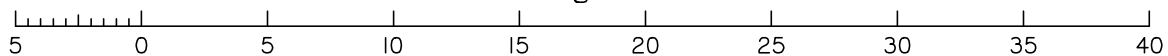


LEGEND

— 18 —	Design Contours	-----	Batter/Bank	— D —	Stormwater Main		Roofwater Pit
	Area of Cut	— □ —	Retaining Wall	— D —	Roofwater Pipe		RW Kerb Adaptor
	Area of Fill	— S —	Sewer Main		Stormwater Manhole	— W —	Water Reticulation
	FSL = Design Surface Level +/- = Amount of Cut / Fill		Sewer Manhole		Stormwater Gully Pit		Water Meter Location
		-----	Sewer Connection				

1. ALLOTMENTS MAY HAVE BEEN TRIMMED, RESHAPED AND TOPSOIL RESPREAD. ANY EARTHWORKS OR FILL ASSOCIATED WITH THOSE WORKS IS NOT SHOWN AND HAS NOT BEEN SUBJECT TO ENGINEERING COMPACTION REQUIREMENTS. IT IS ANTICIPATED THE DEPTH OF SUCH WORKS WOULD NOT EXCEED 450mm, HOWEVER, ISOLATED AREAS GREATER THAN THAT DEPTH MAY OCCUR.
2. IT IS THE PURCHASER'S RESPONSIBILITY TO ARRANGE THEIR OWN INDEPENDENT GEOTECHNICAL TESTING ON ANY ALLOTMENT TO DETERMINE FOUNDATION REQUIREMENTS PRIOR TO CONSTRUCTION.
3. IT IS THE PURCHASER'S RESPONSIBILITY TO OBTAIN THE ACCURATE LOCATION OF SERVICES FROM THE LOCAL AUTHORITY.
4. THE DIMENSIONS AND AREAS SHOWN ON THIS PLAN ARE SUBJECT TO FINAL COUNCIL SEALING APPROVAL AND REGISTRATION IN THE DEPARTMENT OF NATURAL RESOURCES AND MINES.
5. EARTHWORKS FILL ON THE SUBJECT ALLOTMENT WILL BE UNDERTAKEN AND COMPACTED IN ACCORDANCE WITH THE PROVISIONS OF AS3798-2007 TABLES 5.1 AND 8.1 UNDER LEVEL I SUPERVISION.
6. FUTURE LOTS ARE INDICATIVE ONLY AND ARE SUBJECT TO CHANGE AT THE DEVELOPER'S ABSOLUTE DISCRETION.

Scale 1:300 – Lengths are in Metres.



NOTE:

The dimensions and areas shown hereon are subject to field survey and also to the requirements of Council and any other authority which may have requirements under any relevant legislation.
Contour Interval 0.5 Metres.
See draft plan SP342577 for more information.
Refer to Brisbane City Council Application A006181319 for full details.
This note is an integral part of this plan.

DISCLOSURE PLAN

Description

PROPOSED LOT 11
LOT 126 on SP330675
LAND AT SUTTON PLACE
CANNON HILL
BRISBANE CITY COUNCIL

Scale in Metres.

1: 300 at A4

Norris Clarke & O'Brien Pty Ltd



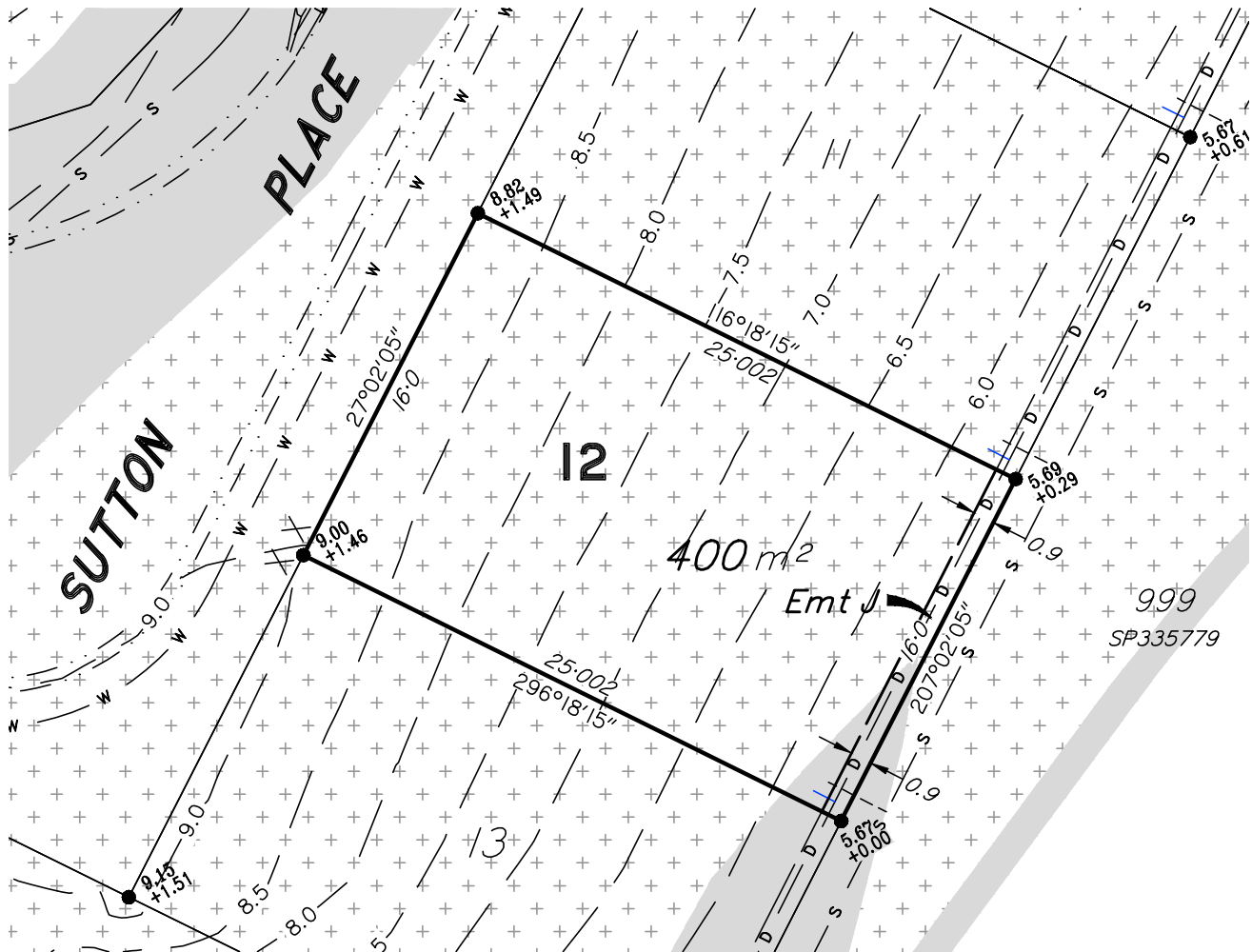
Licensed Surveyors
Town Planners
Development Consultants

Level 1 - Aldi Centre, 12 Bishop Street
Kelvin Grove QLD 4059
ph: 07 3012 0000 fax: 07 3012 0099
email: info@ncob.com.au
ACN 056 870 770 ABN 15 056 870 770

COMP.FILE
6622DP_S5B.DWG

ISSUE:
A

Date 23/08/2023 Ref. 11379DP-11

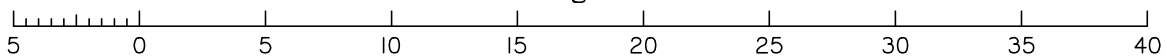


LEGEND

— 18 —	Design Contours	-----	Batter/Bank	— D —	Stormwater Main		Roofwater Pit
	Area of Cut	— □ —	Retaining Wall	— D —	Roofwater Pipe		RW Kerb Adaptor
	Area of Fill	— S —	Sewer Main		Stormwater Manhole	— W —	Water Reticulation
	FSL = Design Surface Level +/- = Amount of Cut / Fill		Sewer Manhole		Stormwater Gully Pit	X	Water Meter Location
		-----	Sewer Connection				

1. ALLOTMENTS MAY HAVE BEEN TRIMMED, RESHAPED AND TOPSOIL RESPREAD. ANY EARTHWORKS OR FILL ASSOCIATED WITH THOSE WORKS IS NOT SHOWN AND HAS NOT BEEN SUBJECT TO ENGINEERING COMPACTION REQUIREMENTS. IT IS ANTICIPATED THE DEPTH OF SUCH WORKS WOULD NOT EXCEED 450mm, HOWEVER, ISOLATED AREAS GREATER THAN THAT DEPTH MAY OCCUR.
2. IT IS THE PURCHASER'S RESPONSIBILITY TO ARRANGE THEIR OWN INDEPENDENT GEOTECHNICAL TESTING ON ANY ALLOTMENT TO DETERMINE FOUNDATION REQUIREMENTS PRIOR TO CONSTRUCTION.
3. IT IS THE PURCHASER'S RESPONSIBILITY TO OBTAIN THE ACCURATE LOCATION OF SERVICES FROM THE LOCAL AUTHORITY.
4. THE DIMENSIONS AND AREAS SHOWN ON THIS PLAN ARE SUBJECT TO FINAL COUNCIL SEALING APPROVAL AND REGISTRATION IN THE DEPARTMENT OF NATURAL RESOURCES AND MINES.
5. EARTHWORKS FILL ON THE SUBJECT ALLOTMENT WILL BE UNDERTAKEN AND COMPACTED IN ACCORDANCE WITH THE PROVISIONS OF AS3798-2007 TABLES 5.1 AND 8.1 UNDER LEVEL 1 SUPERVISION.
6. FUTURE LOTS ARE INDICATIVE ONLY AND ARE SUBJECT TO CHANGE AT THE DEVELOPER'S ABSOLUTE DISCRETION.

Scale 1:300 – Lengths are in Metres.



NOTE:

The dimensions and areas shown hereon are subject to field survey and also to the requirements of Council and any other authority which may have requirements under any relevant legislation.
Contour Interval 0.5 Metres.
See draft plan SP342577 for more information.
Refer to Brisbane City Council Application A006181319 for full details.
This note is an integral part of this plan.

DISCLOSURE PLAN

Description

PROPOSED LOT 12
LOT 126 on SP330675
LAND AT SUTTON PLACE
CANNON HILL
BRISBANE CITY COUNCIL

Scale in Metres.

1: 300 at A4

Norris Clarke & O'Brien Pty Ltd



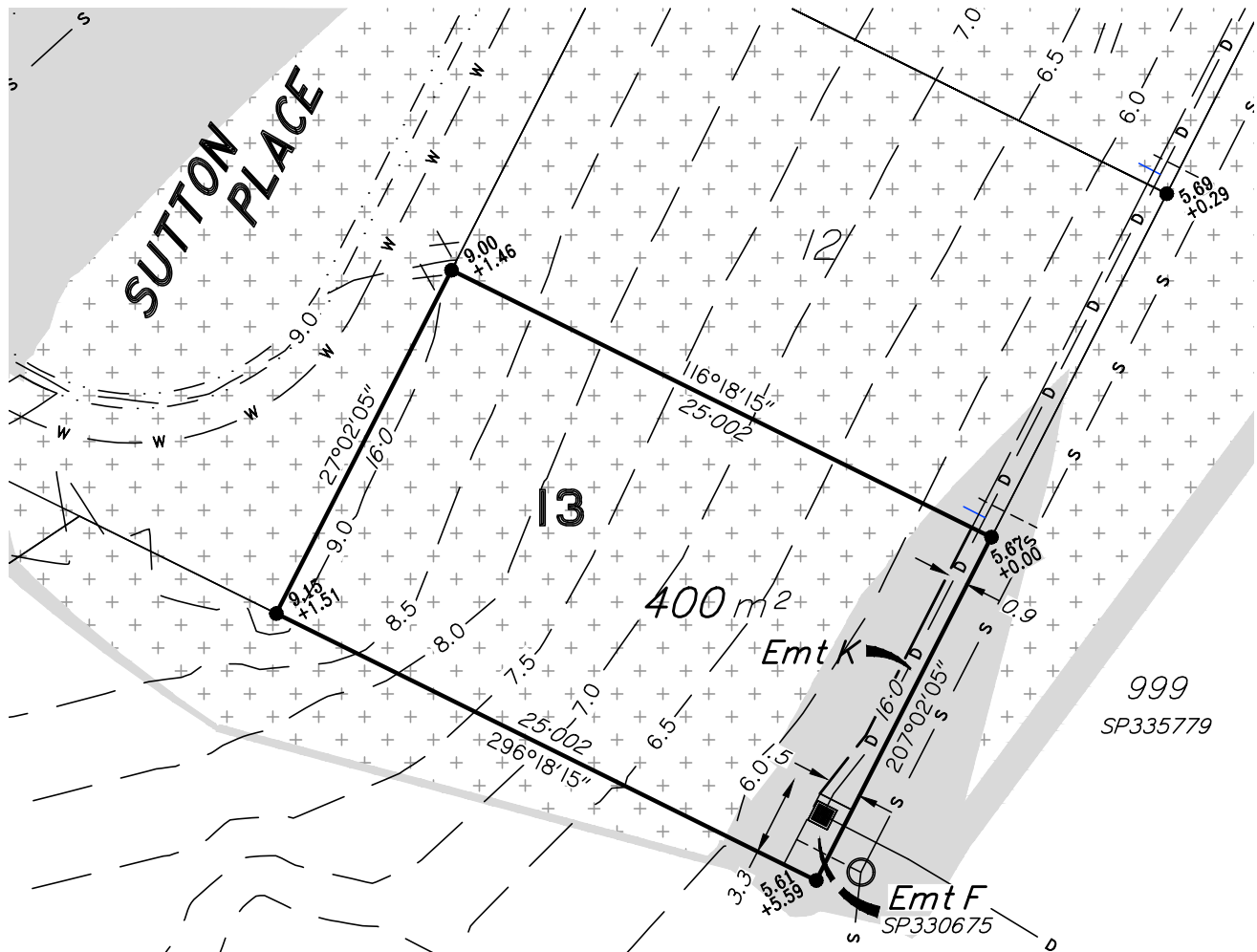
Licensed Surveyors
Town Planners
Development Consultants

Level 1 - Aldi Centre, 12 Bishop Street
Kelvin Grove QLD 4059
ph: 07 3012 0000 fax: 07 3012 0099
email: info@ncob.com.au
ACN 056 870 770 ABN 15 056 870 770

COMP.FILE
6622DP_S5B.DWG

ISSUE:
A

Date 23/08/2023 Ref. 11379DP-12

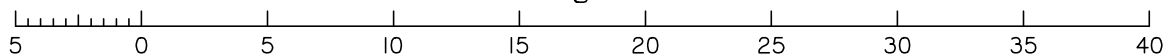


LEGEND

— 18 —	Design Contours	-----	Batter/Bank	— D —	Stormwater Main		Roofwater Pit
	Area of Cut	— □ —	Retaining Wall	— D —	Roofwater Pipe		RW Kerb Adaptor
	Area of Fill	— S —	Sewer Main		Stormwater Manhole	— W —	Water Reticulation
	FSL = Design Surface Level +/- = Amount of Cut / Fill		Sewer Manhole		Stormwater Gully Pit		Water Meter Location
		-----	Sewer Connection				

- ALLOTMENTS MAY HAVE BEEN TRIMMED, RESHAPED AND TOPSOIL RESPREAD. ANY EARTHWORKS OR FILL ASSOCIATED WITH THOSE WORKS IS NOT SHOWN AND HAS NOT BEEN SUBJECT TO ENGINEERING COMPACTION REQUIREMENTS. IT IS ANTICIPATED THE DEPTH OF SUCH WORKS WOULD NOT EXCEED 450mm, HOWEVER, ISOLATED AREAS GREATER THAN THAT DEPTH MAY OCCUR.
- IT IS THE PURCHASER'S RESPONSIBILITY TO ARRANGE THEIR OWN INDEPENDENT GEOTECHNICAL TESTING ON ANY ALLOTMENT TO DETERMINE FOUNDATION REQUIREMENTS PRIOR TO CONSTRUCTION.
- IT IS THE PURCHASER'S RESPONSIBILITY TO OBTAIN THE ACCURATE LOCATION OF SERVICES FROM THE LOCAL AUTHORITY.
- THE DIMENSIONS AND AREAS SHOWN ON THIS PLAN ARE SUBJECT TO FINAL COUNCIL SEALING APPROVAL AND REGISTRATION IN THE DEPARTMENT OF NATURAL RESOURCES AND MINES.
- EARTHWORKS FILL ON THE SUBJECT ALLOTMENT WILL BE UNDERTAKEN AND COMPACTED IN ACCORDANCE WITH THE PROVISIONS OF AS3798-2007 TABLES 5.1 AND 8.1 UNDER LEVEL 1 SUPERVISION.
- FUTURE LOTS ARE INDICATIVE ONLY AND ARE SUBJECT TO CHANGE AT THE DEVELOPER'S ABSOLUTE DISCRETION.

Scale 1:300 – Lengths are in Metres.



NOTE:

The dimensions and areas shown hereon are subject to field survey and also to the requirements of Council and any other authority which may have requirements under any relevant legislation.

Contour Interval 0.5 Metres.

See draft plan SP342577 for more information.

Refer to Brisbane City Council Application A006181319 for full details.

This note is an integral part of this plan.

DISCLOSURE PLAN

Description

PROPOSED LOT 13
LOT 126 on SP330675
LAND AT SUTTON PLACE
CANNON HILL
BRISBANE CITY COUNCIL

Scale in Metres.

1: 300 at A4

Norris Clarke & O'Brien Pty Ltd



Licensed Surveyors
 Town Planners
 Development Consultants

Level 1 - Aldi Centre, 12 Bishop Street
 Kelvin Grove QLD 4059
 ph: 07 3012 0000 fax: 07 3012 0099
 email: info@ncob.com.au
 ACN 056 870 770 ABN 15 056 870 770

COMP.FILE
 6622DP_S5B.DWG

ISSUE:
A

Date 23/08/2023 Ref. 11379DP-13