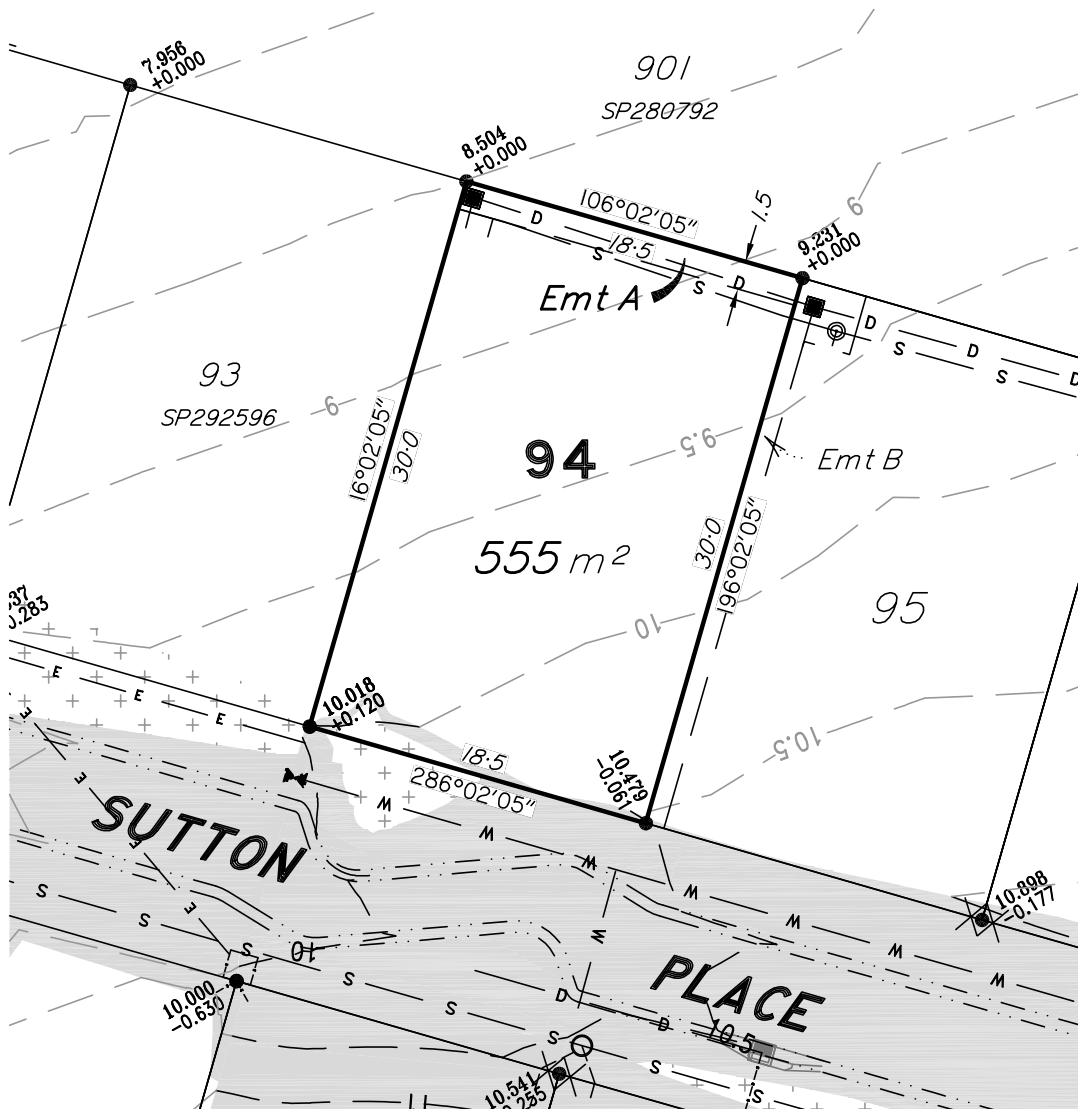


STAGE 5

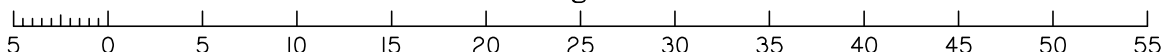


LEGEND

- 18 — Design Contours
- Area of Cut
- Area of Fill
- + = Amount of Fill
- = Amount of Cut
- FSL = Design Surface Level
- Batter/Bank
- Retaining Wall
- Sewer Main
- Sewer Manhole
- Sewer Connection
- Stormwater Main
- Roofwater Pipe
- Stormwater Manhole
- Stormwater Gully Pit
- Roofwater Pit
- RW Kerb Adaptor
- Water Reticulation
- Water Meter Location

1. ALLOTMENTS MAY HAVE BEEN TRIMMED, RESHAPED AND TOPSOIL RESPREAD. ANY EARTHWORKS OR FILL ASSOCIATED WITH THOSE WORKS IS NOT SHOWN AND HAS NOT BEEN SUBJECT TO ENGINEERING COMPACTION REQUIREMENTS. IT IS ANTICIPATED THE DEPTH OF SUCH WORKS WOULD NOT EXCEED 450mm, HOWEVER, ISOLATED AREAS GREATER THAN THAT DEPTH MAY OCCUR.
2. IT IS THE PURCHASER'S RESPONSIBILITY TO ARRANGE THEIR OWN INDEPENDENT GEOTECHNICAL TESTING ON ANY ALLOTMENT TO DETERMINE FOUNDATION REQUIREMENTS PRIOR TO CONSTRUCTION.
3. IT IS THE PURCHASER'S RESPONSIBILITY TO OBTAIN THE ACCURATE LOCATION OF SERVICES FROM THE LOCAL AUTHORITY.
4. THE DIMENSIONS AND AREAS SHOWN ON THIS PLAN ARE SUBJECT TO FINAL COUNCIL SEALING APPROVAL AND REGISTRATION IN THE DEPARTMENT OF NATURAL RESOURCES AND MINES.
5. EARTHWORKS FILL ON THE SUBJECT ALLOTMENT WILL BE UNDERTAKEN AND COMPACTED IN ACCORDANCE WITH THE PROVISIONS OF AS3798-2007 TABLES 5.1 AND 8.1 UNDER LEVEL 1 SUPERVISION.
6. FUTURE LOTS ARE INDICATIVE ONLY AND ARE SUBJECT TO CHANGE AT THE DEVELOPER'S ABSOLUTE DISCRETION.

Scale 1:400 - Lengths are in Metres.



NOTE:

The dimensions and areas shown hereon are subject to field survey and also to the requirements of Council and any other authority which may have requirements under any relevant legislation.
Contour Interval 0.5 Metres.
See draft plan SP330675 for more information.
Refer to Planning & Environment Court Approval 2885/2014 dated 28th November 2014 for full details.
Operational Works Approvals A004467836 for Earthworks dated 12 October 2016 and A004467853 for Roadworks & Drainage dated 12 October 2016.
This note is an integral part of this plan.

DISCLOSURE PLAN

Description

PROPOSED LOT 94
LOT 999 on SP292596
LAND AT 1701-1825 CREEK ROAD
CANNON HILL
BRISBANE CITY COUNCIL

Scale in Metres.

1:400 at A4

Norris Clarke & O'Brien Pty Ltd



Licensed Surveyors
Town Planners
Development Consultants

Level 1 - Aldi Centre, 12 Bishop Street
Kelvin Grove QLD 4059
ph: 07 3012 0000 fax: 07 3012 0099
email: info@ncob.com.au
ACN 056 870 770 ABN 15 056 870 770

COMP.FILE

6622DP_S5.DWG

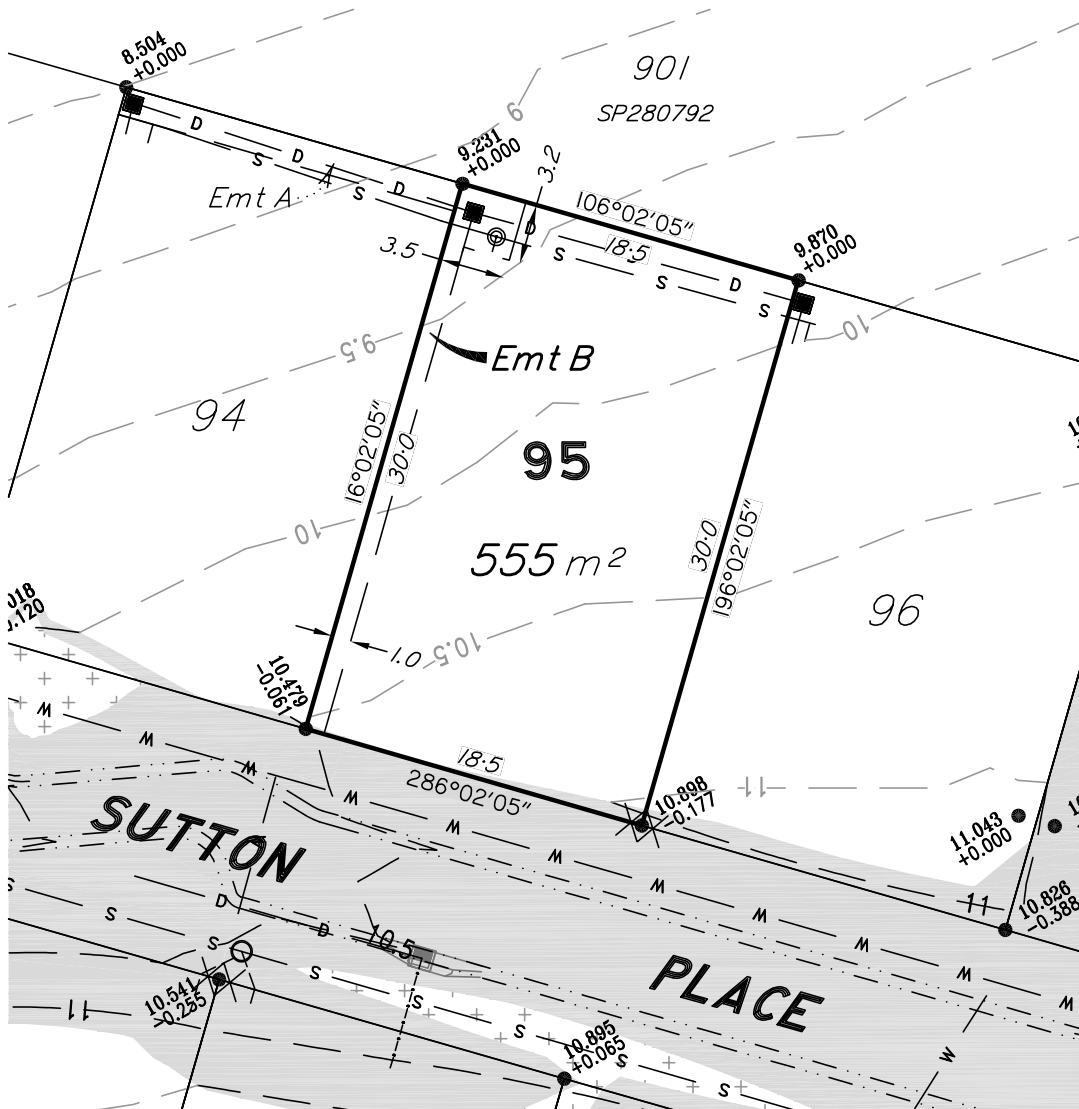
ISSUE:

B

Date

03/08/2021 Ref. 6622DP-94

STAGE 5

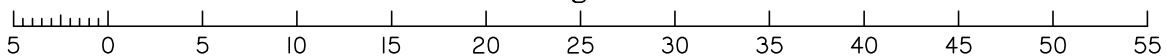


LEGEND

- - - - -18- - - Design Contours
- [Hatched Box] Area of Cut
- [Box with +] Area of Fill
- + = Amount of Fill
- = Amount of Cut
- FSL = Design Surface Level
- [Symbol] Batter/Bank
- [Symbol] Retaining Wall
- [Symbol] Sewer Main
- [Symbol] Sewer Manhole
- [Symbol] Sewer Connection
- [Symbol] Stormwater Main
- [Symbol] Roofwater Pipe
- [Symbol] Stormwater Manhole
- [Symbol] Stormwater Gully Pit
- [Symbol] Roofwater Pit
- [Symbol] RW Kerb Adaptor
- [Symbol] Water Reticulation
- [Symbol] Water Meter Location

1. ALLOTMENTS MAY HAVE BEEN TRIMMED, RESHAPED AND TOPSOIL RESPREAD. ANY EARTHWORKS OR FILL ASSOCIATED WITH THOSE WORKS IS NOT SHOWN AND HAS NOT BEEN SUBJECT TO ENGINEERING COMPACTION REQUIREMENTS. IT IS ANTICIPATED THE DEPTH OF SUCH WORKS WOULD NOT EXCEED 450mm, HOWEVER, ISOLATED AREAS GREATER THAN THAT DEPTH MAY OCCUR.
2. IT IS THE PURCHASER'S RESPONSIBILITY TO ARRANGE THEIR OWN INDEPENDENT GEOTECHNICAL TESTING ON ANY ALLOTMENT TO DETERMINE FOUNDATION REQUIREMENTS PRIOR TO CONSTRUCTION.
3. IT IS THE PURCHASER'S RESPONSIBILITY TO OBTAIN THE ACCURATE LOCATION OF SERVICES FROM THE LOCAL AUTHORITY.
4. THE DIMENSIONS AND AREAS SHOWN ON THIS PLAN ARE SUBJECT TO FINAL COUNCIL SEALING APPROVAL AND REGISTRATION IN THE DEPARTMENT OF NATURAL RESOURCES AND MINES.
5. EARTHWORKS FILL ON THE SUBJECT ALLOTMENT WILL BE UNDERTAKEN AND COMPACTED IN ACCORDANCE WITH THE PROVISIONS OF AS3798-2007 TABLES 5.1 AND 8.1 UNDER LEVEL 1 SUPERVISION.
6. FUTURE LOTS ARE INDICATIVE ONLY AND ARE SUBJECT TO CHANGE AT THE DEVELOPER'S ABSOLUTE DISCRETION.

Scale 1:400 - Lengths are in Metres.



NOTE:

The dimensions and areas shown hereon are subject to field survey and also to the requirements of Council and any other authority which may have requirements under any relevant legislation.
Contour Interval 0.5 Metres.
See draft plan SP330675 for more information.
Refer to Planning & Environment Court Approval 2885/2014 dated 28th November 2014 for full details.
Operational Works Approvals A004467836 for Earthworks dated 12 October 2016 and A004467853 for Roadworks & Drainage dated 12 October 2016.
This note is an integral part of this plan.

DISCLOSURE PLAN

Description

PROPOSED LOT 95
LOT 999 on SP292596
LAND AT 1701-1825 CREEK ROAD
CANNON HILL
BRISBANE CITY COUNCIL

Scale in Metres.

1:400 at A4

Norris Clarke & O'Brien Pty Ltd



Licensed Surveyors
Town Planners
Development Consultants

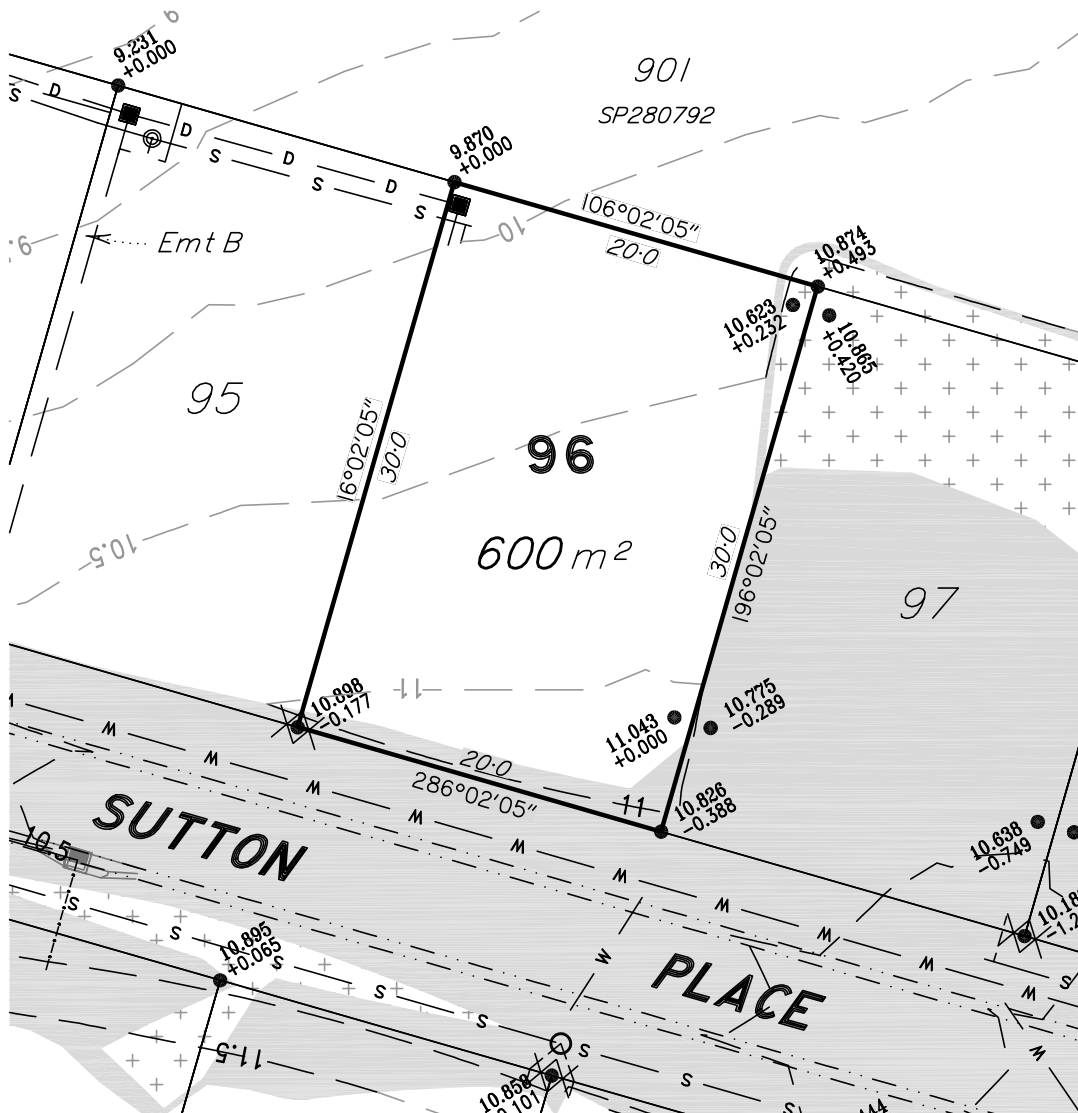
Level 1 - Aldi Centre, 12 Bishop Street
Kelvin Grove QLD 4059
ph: 07 3012 0000 fax: 07 3012 0099
email: info@nccb.com.au
ACN 056 870 770 ABN 15 056 870 770

COMP.FILE
6622DP_S5.DWG

ISSUE: **B**

Date 03/08/2021 Ref. 6622DP-95

STAGE 5

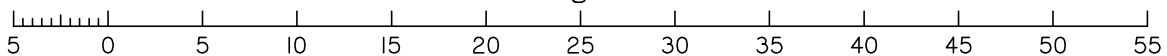


LEGEND

- 18 — Design Contours
- Area of Cut
- Area of Fill
- + = Amount of Fill
- = Amount of Cut
- FSL = Design Surface Level
- Batter/Bank
- Retaining Wall
- Sewer Main
- Sewer Manhole
- Sewer Connection
- Stormwater Main
- Roofwater Pipe
- Stormwater Manhole
- Stormwater Gully Pit
- Roofwater Pit
- RW Kerb Adaptor
- Water Reticulation
- Water Meter Location

1. ALLOTMENTS MAY HAVE BEEN TRIMMED, RESHAPED AND TOPSOIL RESPREAD. ANY EARTHWORKS OR FILL ASSOCIATED WITH THOSE WORKS IS NOT SHOWN AND HAS NOT BEEN SUBJECT TO ENGINEERING COMPACTION REQUIREMENTS. IT IS ANTICIPATED THE DEPTH OF SUCH WORKS WOULD NOT EXCEED 450mm, HOWEVER, ISOLATED AREAS GREATER THAN THAT DEPTH MAY OCCUR.
2. IT IS THE PURCHASER'S RESPONSIBILITY TO ARRANGE THEIR OWN INDEPENDENT GEOTECHNICAL TESTING ON ANY ALLOTMENT TO DETERMINE FOUNDATION REQUIREMENTS PRIOR TO CONSTRUCTION.
3. IT IS THE PURCHASER'S RESPONSIBILITY TO OBTAIN THE ACCURATE LOCATION OF SERVICES FROM THE LOCAL AUTHORITY.
4. THE DIMENSIONS AND AREAS SHOWN ON THIS PLAN ARE SUBJECT TO FINAL COUNCIL SEALING APPROVAL AND REGISTRATION IN THE DEPARTMENT OF NATURAL RESOURCES AND MINES.
5. EARTHWORKS FILL ON THE SUBJECT ALLOTMENT WILL BE UNDERTAKEN AND COMPACTED IN ACCORDANCE WITH THE PROVISIONS OF AS3798-2007 TABLES 5.1 AND 8.1 UNDER LEVEL 1 SUPERVISION.
6. FUTURE LOTS ARE INDICATIVE ONLY AND ARE SUBJECT TO CHANGE AT THE DEVELOPER'S ABSOLUTE DISCRETION.

Scale 1:400 - Lengths are in Metres.



NOTE:

The dimensions and areas shown hereon are subject to field survey and also to the requirements of Council and any other authority which may have requirements under any relevant legislation.
Contour Interval 0.5 Metres.
See draft plan SP330675 for more information.
Refer to Planning & Environment Court Approval 2885/2014 dated 28th November 2014 for full details.
Operational Works Approvals A004467836 for Earthworks dated 12 October 2016 and A004467853 for Roadworks & Drainage dated 12 October 2016.
This note is an integral part of this plan.

DISCLOSURE PLAN

Description

PROPOSED LOT 96
LOT 999 on SP292596
LAND AT 1701-1825 CREEK ROAD
CANNON HILL
BRISBANE CITY COUNCIL

Scale in Metres.

1:400 at A4

Norris Clarke & O'Brien Pty Ltd



Licensed Surveyors
Town Planners
Development Consultants

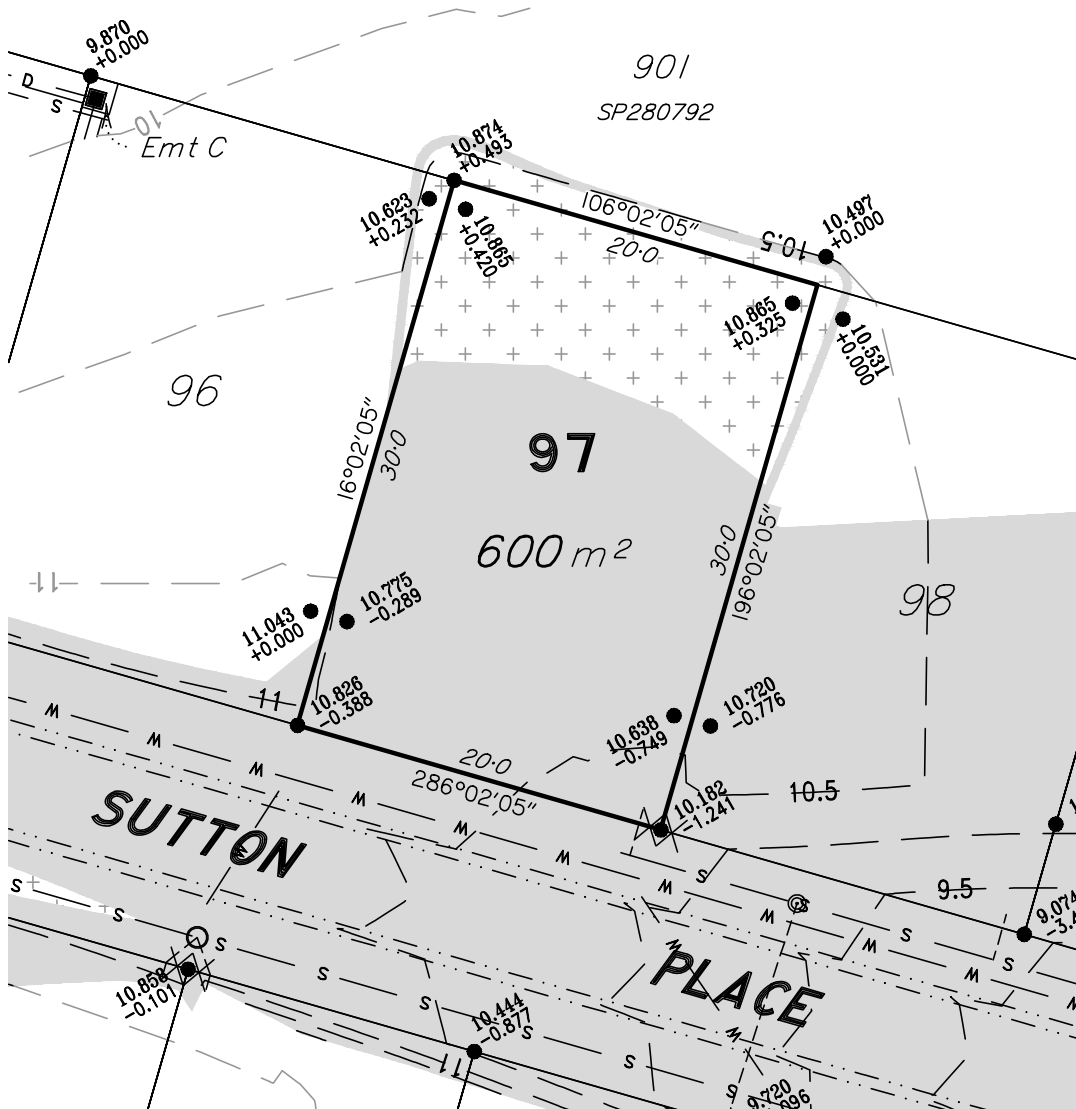
Level 1 - Aldi Centre, 12 Bishop Street
Kelvin Grove QLD 4059
ph: 07 3012 0000 fax: 07 3012 0099
email: info@ncob.com.au
ACN 056 870 770 ABN 15 056 870 770

COMP.FILE
6622DP_S5.DWG

ISSUE: **B**

Date 03/08/2021 Ref. 6622DP-96

STAGE 5

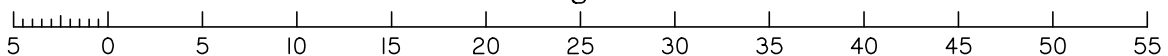


LEGEND

- 18 — Design Contours
- Area of Cut
- Area of Fill
- + = Amount of Fill
- = Amount of Cut
- FSL = Design Surface Level
- Batter/Bank
- Retaining Wall
- Sewer Main
- Sewer Manhole
- Sewer Connection
- Stormwater Main
- Roofwater Pipe
- Stormwater Manhole
- Stormwater Gully Pit
- Roofwater Pit
- RW Kerb Adaptor
- Water Reticulation
- Water Meter Location

1. ALLOTMENTS MAY HAVE BEEN TRIMMED, RESHAPED AND TOPSOIL RESPREAD. ANY EARTHWORKS OR FILL ASSOCIATED WITH THOSE WORKS IS NOT SHOWN AND HAS NOT BEEN SUBJECT TO ENGINEERING COMPACTION REQUIREMENTS. IT IS ANTICIPATED THE DEPTH OF SUCH WORKS WOULD NOT EXCEED 450mm, HOWEVER, ISOLATED AREAS GREATER THAN THAT DEPTH MAY OCCUR.
2. IT IS THE PURCHASER'S RESPONSIBILITY TO ARRANGE THEIR OWN INDEPENDENT GEOTECHNICAL TESTING ON ANY ALLOTMENT TO DETERMINE FOUNDATION REQUIREMENTS PRIOR TO CONSTRUCTION.
3. IT IS THE PURCHASER'S RESPONSIBILITY TO OBTAIN THE ACCURATE LOCATION OF SERVICES FROM THE LOCAL AUTHORITY.
4. THE DIMENSIONS AND AREAS SHOWN ON THIS PLAN ARE SUBJECT TO FINAL COUNCIL SEALING APPROVAL AND REGISTRATION IN THE DEPARTMENT OF NATURAL RESOURCES AND MINES.
5. EARTHWORKS FILL ON THE SUBJECT ALLOTMENT WILL BE UNDERTAKEN AND COMPACTED IN ACCORDANCE WITH THE PROVISIONS OF AS3798-2007 TABLES 5.1 AND 8.1 UNDER LEVEL 1 SUPERVISION.
6. FUTURE LOTS ARE INDICATIVE ONLY AND ARE SUBJECT TO CHANGE AT THE DEVELOPER'S ABSOLUTE DISCRETION.

Scale 1:400 - Lengths are in Metres.



NOTE:

The dimensions and areas shown hereon are subject to field survey and also to the requirements of Council and any other authority which may have requirements under any relevant legislation.

Contour Interval 0.5 Metres.

See draft plan SP330675 for more information.

Refer to Planning & Environment Court Approval 2885/2014 dated 28th November 2014 for full details.

Operational Works Approvals A004467836 for Earthworks dated 12 October 2016 and A004467853 for Roadworks & Drainage dated 12 October 2016.

This note is an integral part of this plan.

DISCLOSURE PLAN

Description

PROPOSED LOT 97
LOT 999 on SP292596
LAND AT 1701-1825 CREEK ROAD
CANNON HILL
BRISBANE CITY COUNCIL

Scale in Metres.

1:400 at A4

Norris Clarke & O'Brien Pty Ltd



Licensed Surveyors
 Town Planners
 Development Consultants

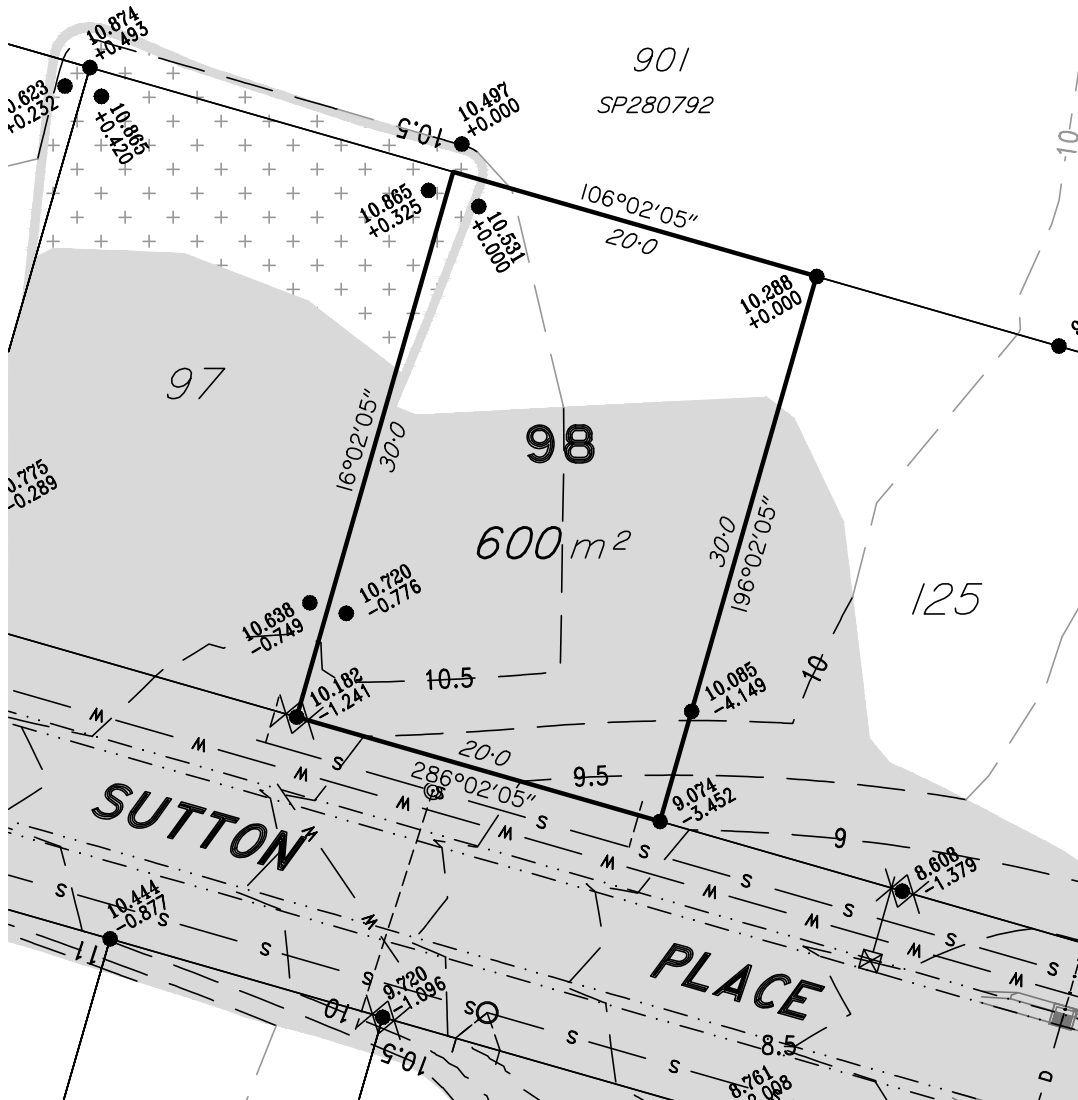
Level 1 - Aldi Centre, 12 Bishop Street
 Kelvin Grove QLD 4059
 ph: 07 3012 0000 fax: 07 3012 0099
 email: info@ncob.com.au
 ACN 056 870 770 ABN 15 056 870 770

COMP.FILE
 6622DP_S5.DWG

ISSUE:
A

Date 03/08/2021 Ref. 6622DP-97

STAGE 5

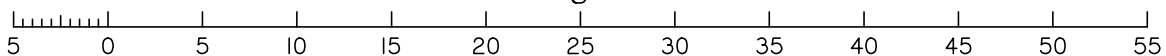


LEGEND

- 18 — Design Contours
- [Shaded Area] Area of Cut
- [Cross-hatched Area] Area of Fill
- + = Amount of Fill
- = Amount of Cut
- FSL = Design Surface Level
- [Symbol] Batter/Bank
- [Symbol] Retaining Wall
- [Symbol] Sewer Main
- [Symbol] Sewer Manhole
- [Symbol] Sewer Connection
- [Symbol] Stormwater Main
- [Symbol] Roofwater Pipe
- [Symbol] Stormwater Manhole
- [Symbol] Stormwater Gully Pit
- [Symbol] Roofwater Pit
- [Symbol] RW Kerb Adaptor
- [Symbol] Water Reticulation
- [Symbol] Water Meter Location

1. ALLOTMENTS MAY HAVE BEEN TRIMMED, RESHAPED AND TOPSOIL RESPREAD. ANY EARTHWORKS OR FILL ASSOCIATED WITH THOSE WORKS IS NOT SHOWN AND HAS NOT BEEN SUBJECT TO ENGINEERING COMPACTION REQUIREMENTS. IT IS ANTICIPATED THE DEPTH OF SUCH WORKS WOULD NOT EXCEED 450mm, HOWEVER, ISOLATED AREAS GREATER THAN THAT DEPTH MAY OCCUR.
2. IT IS THE PURCHASER'S RESPONSIBILITY TO ARRANGE THEIR OWN INDEPENDENT GEOTECHNICAL TESTING ON ANY ALLOTMENT TO DETERMINE FOUNDATION REQUIREMENTS PRIOR TO CONSTRUCTION.
3. IT IS THE PURCHASER'S RESPONSIBILITY TO OBTAIN THE ACCURATE LOCATION OF SERVICES FROM THE LOCAL AUTHORITY.
4. THE DIMENSIONS AND AREAS SHOWN ON THIS PLAN ARE SUBJECT TO FINAL COUNCIL SEALING APPROVAL AND REGISTRATION IN THE DEPARTMENT OF NATURAL RESOURCES AND MINES.
5. EARTHWORKS FILL ON THE SUBJECT ALLOTMENT WILL BE UNDERTAKEN AND COMPACTED IN ACCORDANCE WITH THE PROVISIONS OF AS3798-2007 TABLES 5.1 AND 8.1 UNDER LEVEL 1 SUPERVISION.
6. FUTURE LOTS ARE INDICATIVE ONLY AND ARE SUBJECT TO CHANGE AT THE DEVELOPER'S ABSOLUTE DISCRETION.

Scale 1:400 – Lengths are in Metres.



NOTE:

The dimensions and areas shown hereon are subject to field survey and also to the requirements of Council and any other authority which may have requirements under any relevant legislation.
Contour Interval 0.5 Metres.
See draft plan SP330675 for more information.
Refer to Planning & Environment Court Approval 2885/2014 dated 28th November 2014 for full details.
Operational Works Approvals A004467836 for Earthworks dated 12 October 2016 and A004467853 for Roadworks & Drainage dated 12 October 2016.
This note is an integral part of this plan.

DISCLOSURE PLAN

Description

PROPOSED LOT 98
LOT 999 on SP292596
LAND AT 1701-1825 CREEK ROAD
CANNON HILL
BRISBANE CITY COUNCIL

Scale in Metres.

1:400 at A4

Norris Clarke & O'Brien Pty Ltd



Licensed Surveyors
Town Planners
Development Consultants

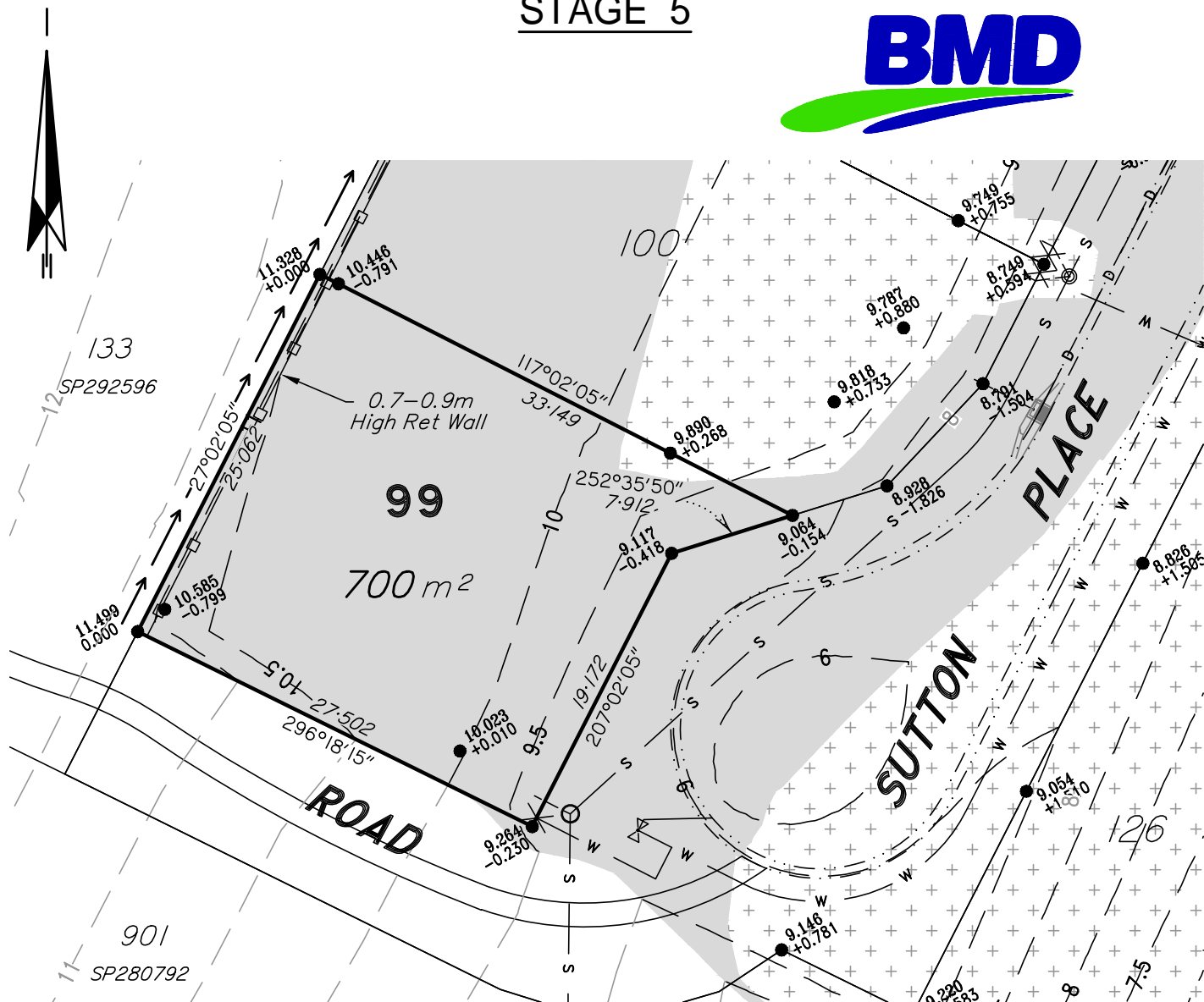
Level 1 - Aldi Centre, 12 Bishop Street
Kelvin Grove QLD 4059
ph: 07 3012 0000 fax: 07 3012 0099
email: info@nccb.com.au
ACN 056 870 770 ABN 15 056 870 770

COMP.FILE
6622DP_S5.DWG

ISSUE:
A

Date 03/08/2021 Ref. 6622DP-98

STAGE 5

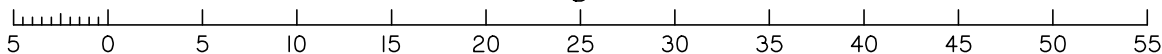


LEGEND

— 18 —	Design Contours		Batter/Bank	— D —	Stormwater Main		RW Kerb Adaptor
	Area of Cut		Retaining Wall	— D —	Roofwater Pipe	— W —	Water Reticulation
	Area of Fill	— S —	Sewer Main		Stormwater Manhole	X	Water Meter Location
+	= Amount of Fill		Sewer Manhole		Stormwater Gully Pit		
-	= Amount of Cut	— S —	Sewer Connection		Roofwater Pit		
FSL	= Design Surface Level						

- ALLOTMENTS MAY HAVE BEEN TRIMMED, RESHAPED AND TOPSOIL RESPREAD. ANY EARTHWORKS OR FILL ASSOCIATED WITH THOSE WORKS IS NOT SHOWN AND HAS NOT BEEN SUBJECT TO ENGINEERING COMPACTION REQUIREMENTS. IT IS ANTICIPATED THE DEPTH OF SUCH WORKS WOULD NOT EXCEED 450mm, HOWEVER, ISOLATED AREAS GREATER THAN THAT DEPTH MAY OCCUR.
- IT IS THE PURCHASER'S RESPONSIBILITY TO ARRANGE THEIR OWN INDEPENDENT GEOTECHNICAL TESTING ON ANY ALLOTMENT TO DETERMINE FOUNDATION REQUIREMENTS PRIOR TO CONSTRUCTION.
- IT IS THE PURCHASER'S RESPONSIBILITY TO OBTAIN THE ACCURATE LOCATION OF SERVICES FROM THE LOCAL AUTHORITY.
- THE DIMENSIONS AND AREAS SHOWN ON THIS PLAN ARE SUBJECT TO FINAL COUNCIL SEALING APPROVAL AND REGISTRATION IN THE DEPARTMENT OF NATURAL RESOURCES AND MINES.
- EARTHWORKS FILL ON THE SUBJECT ALLOTMENT WILL BE UNDERTAKEN AND COMPACTED IN ACCORDANCE WITH THE PROVISIONS OF AS3798-2007 TABLES 5.1 AND 8.1 UNDER LEVEL 1 SUPERVISION.
- FUTURE LOTS ARE INDICATIVE ONLY AND ARE SUBJECT TO CHANGE AT THE DEVELOPER'S ABSOLUTE DISCRETION.

Scale 1:400 – Lengths are in Metres.



NOTE:

The dimensions and areas shown hereon are subject to field survey and also to the requirements of Council and any other authority which may have requirements under any relevant legislation.
Contour Interval 0.5 Metres.
See draft plan SP330675 for more information.
Refer to Planning & Environment Court Approval 2885/2014 dated 28th November 2014 for full details.
Operational Works Approvals A004467836 for Earthworks dated 12 October 2016 and A004467853 for Roadworks & Drainage dated 12 October 2016.
This note is an integral part of this plan.

DISCLOSURE PLAN

Description

PROPOSED LOT 99
LOT 999 on SP292596
LAND AT 1701-1825 CREEK ROAD
CANNON HILL
BRISBANE CITY COUNCIL

Scale in Metres.

1:400 at A4

Norris Clarke & O'Brien Pty Ltd



Licensed Surveyors
Town Planners
Development Consultants

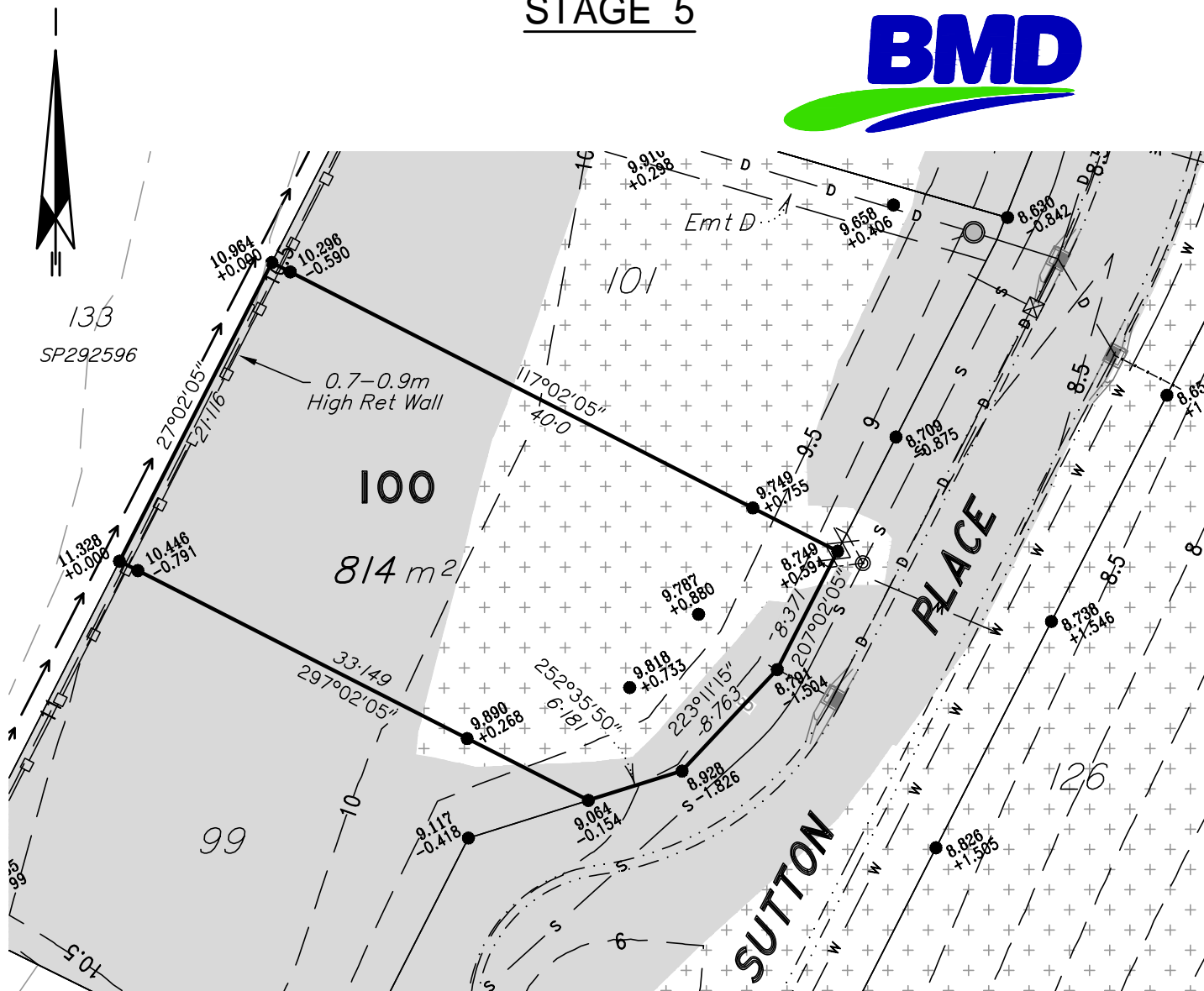
Level 1 - Aldi Centre, 12 Bishop Street
Kelvin Grove QLD 4059
ph: 07 3012 0000 fax: 07 3012 0099
email: info@ncob.com.au
ACN 056 870 770 ABN 15 056 870 770

COMP.FILE
6622DP_S5.DWG

ISSUE:
A

Date 03/08/2021 Ref. 6622DP-99

STAGE 5

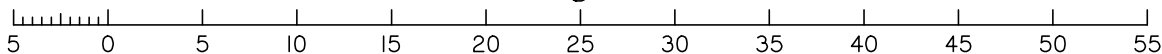


LEGEND

— 18 —	Design Contours		Batter/Bank	— D —	Stormwater Main		RW Kerb Adaptor
	Area of Cut		Retaining Wall	— D —	Roofwater Pipe	— W —	Water Reticulation
	Area of Fill	— S —	Sewer Main		Stormwater Manhole	X	Water Meter Location
+	= Amount of Fill		Sewer Manhole		Stormwater Gully Pit		
-	= Amount of Cut	— — — —	Sewer Connection		Roofwater Pit		
FSL	= Design Surface Level						

1. ALLOTMENTS MAY HAVE BEEN TRIMMED, RESHAPED AND TOPSOIL RESPREAD. ANY EARTHWORKS OR FILL ASSOCIATED WITH THOSE WORKS IS NOT SHOWN AND HAS NOT BEEN SUBJECT TO ENGINEERING COMPACTION REQUIREMENTS. IT IS ANTICIPATED THE DEPTH OF SUCH WORKS WOULD NOT EXCEED 450mm, HOWEVER, ISOLATED AREAS GREATER THAN THAT DEPTH MAY OCCUR.
2. IT IS THE PURCHASER'S RESPONSIBILITY TO ARRANGE THEIR OWN INDEPENDENT GEOTECHNICAL TESTING ON ANY ALLOTMENT TO DETERMINE FOUNDATION REQUIREMENTS PRIOR TO CONSTRUCTION.
3. IT IS THE PURCHASER'S RESPONSIBILITY TO OBTAIN THE ACCURATE LOCATION OF SERVICES FROM THE LOCAL AUTHORITY.
4. THE DIMENSIONS AND AREAS SHOWN ON THIS PLAN ARE SUBJECT TO FINAL COUNCIL SEALING APPROVAL AND REGISTRATION IN THE DEPARTMENT OF NATURAL RESOURCES AND MINES.
5. EARTHWORKS FILL ON THE SUBJECT ALLOTMENT WILL BE UNDERTAKEN AND COMPACTED IN ACCORDANCE WITH THE PROVISIONS OF AS3798-2007 TABLES 5.1 AND 8.1 UNDER LEVEL 1 SUPERVISION.
6. FUTURE LOTS ARE INDICATIVE ONLY AND ARE SUBJECT TO CHANGE AT THE DEVELOPER'S ABSOLUTE DISCRETION.

Scale 1:400 - Lengths are in Metres.



NOTE:

The dimensions and areas shown hereon are subject to field survey and also to the requirements of Council and any other authority which may have requirements under any relevant legislation.
Contour Interval 0.5 Metres.
See draft plan SP330675 for more information.
Refer to Planning & Environment Court Approval 2885/2014 dated 28th November 2014 for full details.
Operational Works Approvals A004467836 for Earthworks dated 12 October 2016 and A004467853 for Roadworks & Drainage dated 12 October 2016.
This note is an integral part of this plan.

DISCLOSURE PLAN

Description

PROPOSED LOT 100
LOT 999 on SP292596
LAND AT 1701-1825 CREEK ROAD
CANNON HILL
BRISBANE CITY COUNCIL

Scale in Metres.

1:400 at A4

Norris Clarke & O'Brien Pty Ltd



Licensed Surveyors
Town Planners
Development Consultants

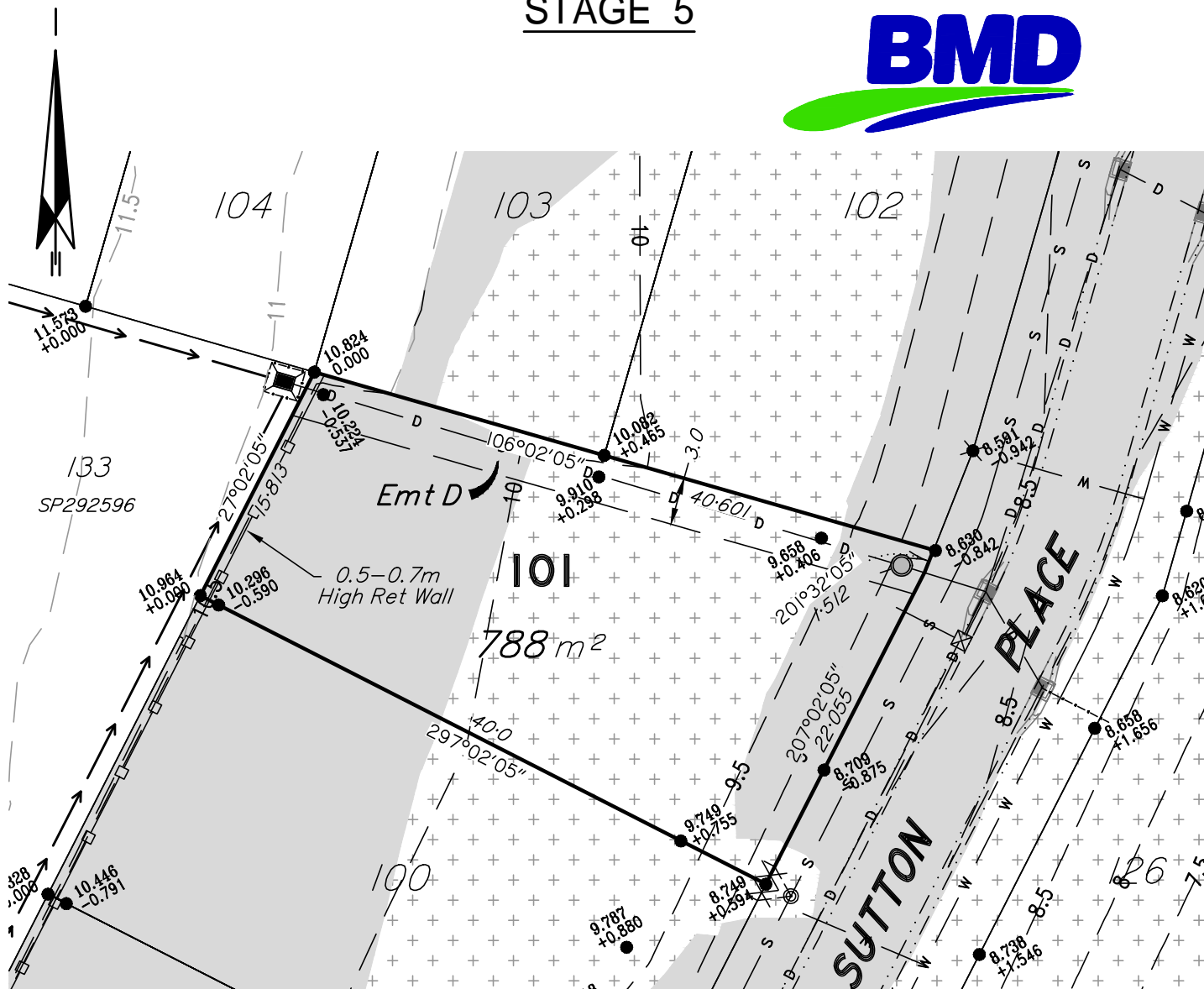
Level 1 - Aldi Centre, 12 Bishop Street
Kelvin Grove QLD 4059
ph: 07 3012 0000 fax: 07 3012 0099
email: info@nccb.com.au
ACN 056 870 770 ABN 15 056 870 770

COMP.FILE
6622DP_S5.DWG

ISSUE:
A

Date 03/08/2021 Ref. 6622DP-100

STAGE 5

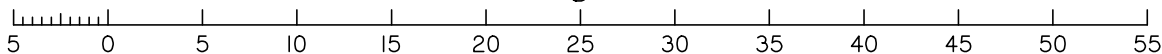


LEGEND

— 18 —	Design Contours		Batter/Bank	— D —	Stormwater Main		RW Kerb Adaptor
	Area of Cut		Retaining Wall	— D —	Roofwater Pipe	— W —	Water Reticulation
	Area of Fill	— S —	Sewer Main		Stormwater Manhole	X	Water Meter Location
+ = Amount of Fill			Sewer Manhole		Stormwater Gully Pit		
- = Amount of Cut		— — — —	Sewer Connection		Roofwater Pit		
FSL = Design Surface Level							

1. ALLOTMENTS MAY HAVE BEEN TRIMMED, RESHAPED AND TOPSOIL RESPREAD. ANY EARTHWORKS OR FILL ASSOCIATED WITH THOSE WORKS IS NOT SHOWN AND HAS NOT BEEN SUBJECT TO ENGINEERING COMPACTION REQUIREMENTS. IT IS ANTICIPATED THE DEPTH OF SUCH WORKS WOULD NOT EXCEED 450mm, HOWEVER, ISOLATED AREAS GREATER THAN THAT DEPTH MAY OCCUR.
2. IT IS THE PURCHASER'S RESPONSIBILITY TO ARRANGE THEIR OWN INDEPENDENT GEOTECHNICAL TESTING ON ANY ALLOTMENT TO DETERMINE FOUNDATION REQUIREMENTS PRIOR TO CONSTRUCTION.
3. IT IS THE PURCHASER'S RESPONSIBILITY TO OBTAIN THE ACCURATE LOCATION OF SERVICES FROM THE LOCAL AUTHORITY.
4. THE DIMENSIONS AND AREAS SHOWN ON THIS PLAN ARE SUBJECT TO FINAL COUNCIL SEALING APPROVAL AND REGISTRATION IN THE DEPARTMENT OF NATURAL RESOURCES AND MINES.
5. EARTHWORKS FILL ON THE SUBJECT ALLOTMENT WILL BE UNDERTAKEN AND COMPACTED IN ACCORDANCE WITH THE PROVISIONS OF AS3798-2007 TABLES 5.1 AND 8.1 UNDER LEVEL 1 SUPERVISION.
6. FUTURE LOTS ARE INDICATIVE ONLY AND ARE SUBJECT TO CHANGE AT THE DEVELOPER'S ABSOLUTE DISCRETION.

Scale 1:400 – Lengths are in Metres.



NOTE:

The dimensions and areas shown hereon are subject to field survey and also to the requirements of Council and any other authority which may have requirements under any relevant legislation.
Contour Interval 0.5 Metres.
See draft plan SP330675 for more information.
Refer to Planning & Environment Court Approval 2885/2014 dated 28th November 2014 for full details.
Operational Works Approvals A004467836 for Earthworks dated 12 October 2016 and A004467853 for Roadworks & Drainage dated 12 October 2016.
This note is an integral part of this plan.

DISCLOSURE PLAN

Description

PROPOSED LOT 101
LOT 999 on SP292596
LAND AT 1701-1825 CREEK ROAD
CANNON HILL
BRISBANE CITY COUNCIL

Scale in Metres.

1:400 at A4

Norris Clarke & O'Brien Pty Ltd



Licensed Surveyors
Town Planners
Development Consultants

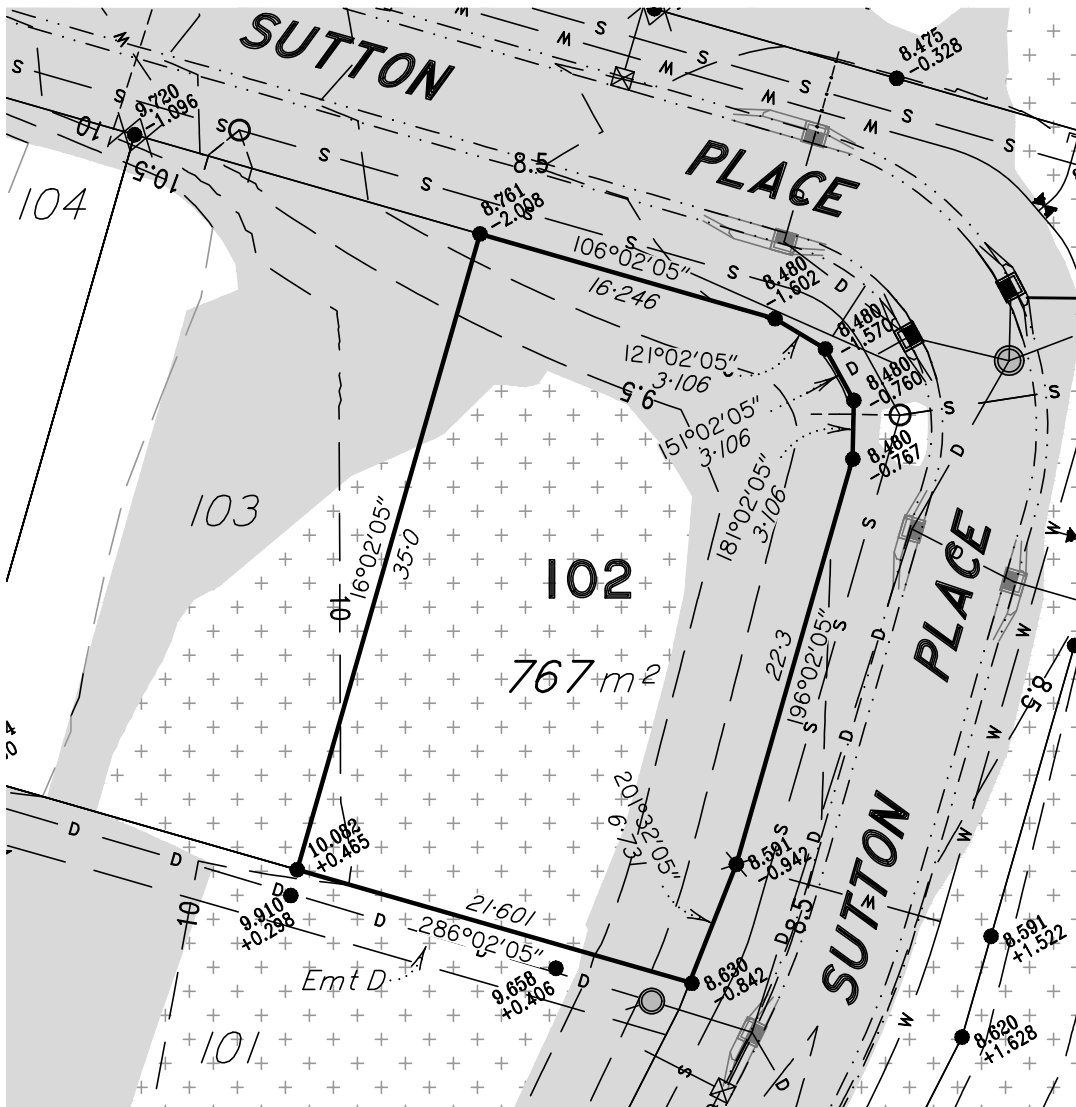
Level 1 - Aldi Centre, 12 Bishop Street
Kelvin Grove QLD 4059
ph: 07 3012 0000 fax: 07 3012 0099
email: info@ncob.com.au
ACN 056 870 770 ABN 15 056 870 770

COMP.FILE
6622DP_S5.DWG

ISSUE:
A

Date 03/08/2021 Ref. 6622DP-101

STAGE 5

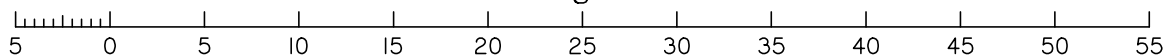


LEGEND

- 18 — Design Contours
- Area of Cut
- Area of Fill
- + = Amount of Fill
- = Amount of Cut
FSL = Design Surface Level
- Batter/Bank
- Retaining Wall
- Sewer Main
- Sewer Manhole
- Sewer Connection
- Stormwater Main
- Roofwater Pipe
- Stormwater Manhole
- Stormwater Gully Pit
- Roofwater Pit
- RW Kerb Adaptor
- Water Reticulation
- Water Meter Location

1. ALLOTMENTS MAY HAVE BEEN TRIMMED, RESHAPED AND TOPSOIL RESPREAD. ANY EARTHWORKS OR FILL ASSOCIATED WITH THOSE WORKS IS NOT SHOWN AND HAS NOT BEEN SUBJECT TO ENGINEERING COMPACTION REQUIREMENTS. IT IS ANTICIPATED THE DEPTH OF SUCH WORKS WOULD NOT EXCEED 450mm, HOWEVER, ISOLATED AREAS GREATER THAN THAT DEPTH MAY OCCUR.
2. IT IS THE PURCHASER'S RESPONSIBILITY TO ARRANGE THEIR OWN INDEPENDENT GEOTECHNICAL TESTING ON ANY ALLOTMENT TO DETERMINE FOUNDATION REQUIREMENTS PRIOR TO CONSTRUCTION.
3. IT IS THE PURCHASER'S RESPONSIBILITY TO OBTAIN THE ACCURATE LOCATION OF SERVICES FROM THE LOCAL AUTHORITY.
4. THE DIMENSIONS AND AREAS SHOWN ON THIS PLAN ARE SUBJECT TO FINAL COUNCIL SEALING APPROVAL AND REGISTRATION IN THE DEPARTMENT OF NATURAL RESOURCES AND MINES.
5. EARTHWORKS FILL ON THE SUBJECT ALLOTMENT WILL BE UNDERTAKEN AND COMPACTED IN ACCORDANCE WITH THE PROVISIONS OF AS3798-2007 TABLES 5.1 AND 8.1 UNDER LEVEL 1 SUPERVISION.
6. FUTURE LOTS ARE INDICATIVE ONLY AND ARE SUBJECT TO CHANGE AT THE DEVELOPER'S ABSOLUTE DISCRETION.

Scale 1:400 – Lengths are in Metres.



NOTE:

The dimensions and areas shown hereon are subject to field survey and also to the requirements of Council and any other authority which may have requirements under any relevant legislation.
Contour Interval 0.5 Metres.
See draft plan SP330675 for more information.
Refer to Planning & Environment Court Approval 2885/2014 dated 28th November 2014 for full details.
Operational Works Approvals A004467836 for Earthworks dated 12 October 2016 and A004467853 for Roadworks & Drainage dated 12 October 2016.
This note is an integral part of this plan.

DISCLOSURE PLAN

Description

PROPOSED LOT 102
LOT 999 on SP292596
LAND AT 1701-1825 CREEK ROAD
CANNON HILL
BRISBANE CITY COUNCIL

Scale in Metres.

1:400 at A4

Norris Clarke & O'Brien Pty Ltd



Licensed Surveyors
Town Planners
Development Consultants

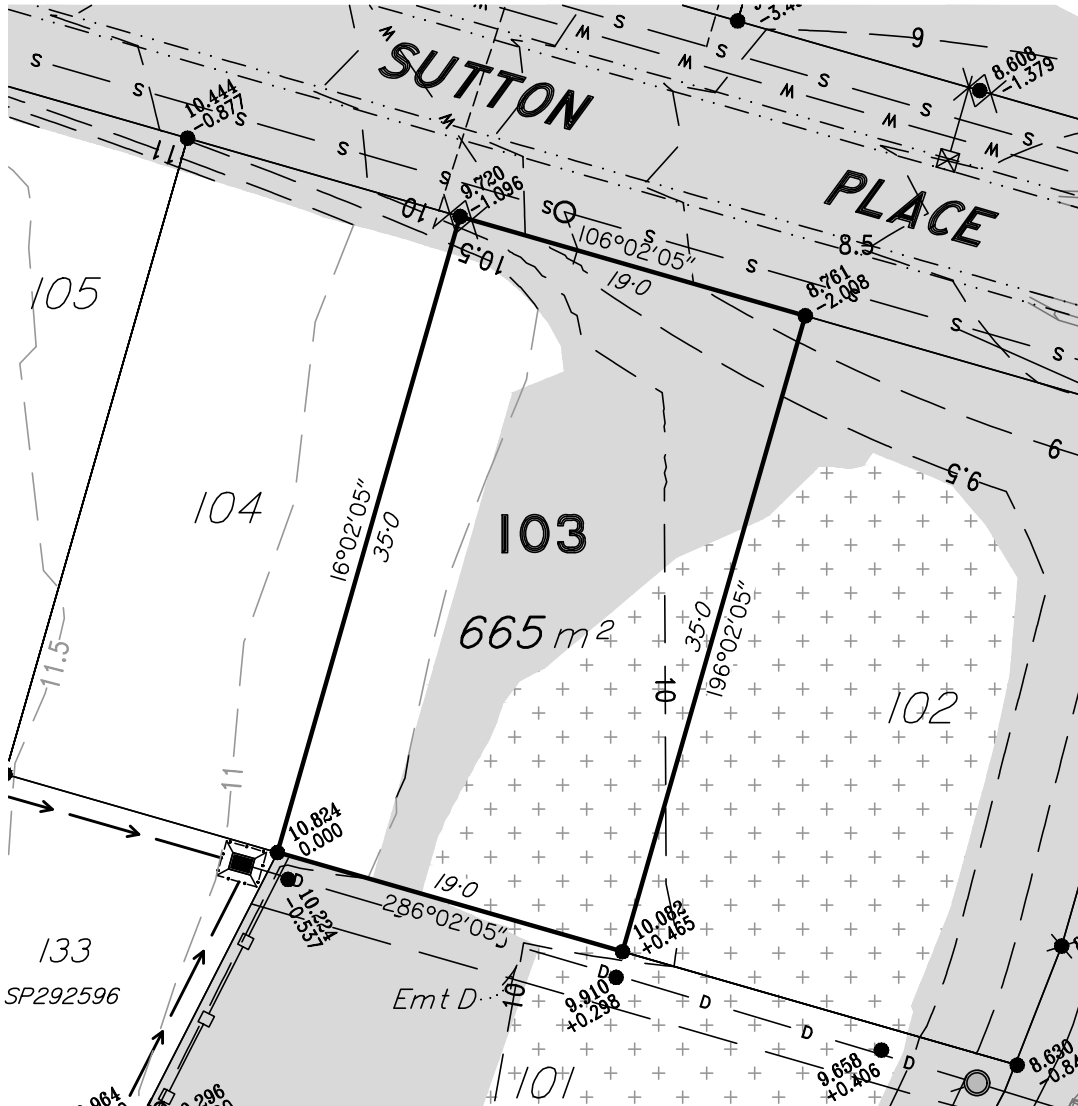
Level 1 - Aldi Centre, 12 Bishop Street
Kelvin Grove QLD 4059
ph: 07 3012 0000 fax: 07 3012 0099
email: info@ncob.com.au
ACN 056 870 770 ABN 15 056 870 770

COMP.FILE
6622DP_S5.DWG

ISSUE:
A

Date 03/08/2021 Ref. 6622DP-102

STAGE 5

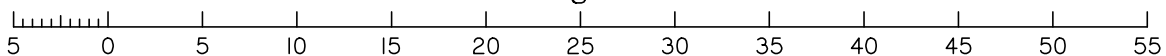


LEGEND

- 18 — Design Contours
- Area of Cut
- Area of Fill
- + = Amount of Fill
- = Amount of Cut
FSL = Design Surface Level
- Batter/Bank
- Retaining Wall
- Sewer Main
- Sewer Manhole
- Sewer Connection
- Stormwater Main
- Roofwater Pipe
- Stormwater Manhole
- Stormwater Gully Pit
- Roofwater Pit
- RW Kerb Adaptor
- Water Reticulation
- Water Meter Location

1. ALLOTMENTS MAY HAVE BEEN TRIMMED, RESHAPED AND TOPSOIL RESPREAD. ANY EARTHWORKS OR FILL ASSOCIATED WITH THOSE WORKS IS NOT SHOWN AND HAS NOT BEEN SUBJECT TO ENGINEERING COMPACTION REQUIREMENTS. IT IS ANTICIPATED THE DEPTH OF SUCH WORKS WOULD NOT EXCEED 450mm, HOWEVER, ISOLATED AREAS GREATER THAN THAT DEPTH MAY OCCUR.
2. IT IS THE PURCHASER'S RESPONSIBILITY TO ARRANGE THEIR OWN INDEPENDENT GEOTECHNICAL TESTING ON ANY ALLOTMENT TO DETERMINE FOUNDATION REQUIREMENTS PRIOR TO CONSTRUCTION.
3. IT IS THE PURCHASER'S RESPONSIBILITY TO OBTAIN THE ACCURATE LOCATION OF SERVICES FROM THE LOCAL AUTHORITY.
4. THE DIMENSIONS AND AREAS SHOWN ON THIS PLAN ARE SUBJECT TO FINAL COUNCIL SEALING APPROVAL AND REGISTRATION IN THE DEPARTMENT OF NATURAL RESOURCES AND MINES.
5. EARTHWORKS FILL ON THE SUBJECT ALLOTMENT WILL BE UNDERTAKEN AND COMPACTED IN ACCORDANCE WITH THE PROVISIONS OF AS3798-2007 TABLES 5.1 AND 8.1 UNDER LEVEL 1 SUPERVISION.
6. FUTURE LOTS ARE INDICATIVE ONLY AND ARE SUBJECT TO CHANGE AT THE DEVELOPER'S ABSOLUTE DISCRETION.

Scale 1:400 – Lengths are in Metres.



NOTE:

The dimensions and areas shown hereon are subject to field survey and also to the requirements of Council and any other authority which may have requirements under any relevant legislation.
Contour Interval 0.5 Metres.
See draft plan SP330675 for more information.
Refer to Planning & Environment Court Approval 2885/2014 dated 28th November 2014 for full details.
Operational Works Approvals A004467836 for Earthworks dated 12 October 2016 and A004467853 for Roadworks & Drainage dated 12 October 2016.
This note is an integral part of this plan.

DISCLOSURE PLAN

Description

PROPOSED LOT 103
LOT 999 on SP292596
LAND AT 1701-1825 CREEK ROAD
CANNON HILL
BRISBANE CITY COUNCIL

Scale in Metres.

1:400 at A4

Norris Clarke & O'Brien Pty Ltd



Licensed Surveyors
Town Planners
Development Consultants

Level 1 - Aldi Centre, 12 Bishop Street
Kelvin Grove QLD 4059
ph: 07 3012 0000 fax: 07 3012 0099
email: info@nccb.com.au
ACN 056 870 770 ABN 15 056 870 770

COMP.FILE

6622DP_S5.DWG

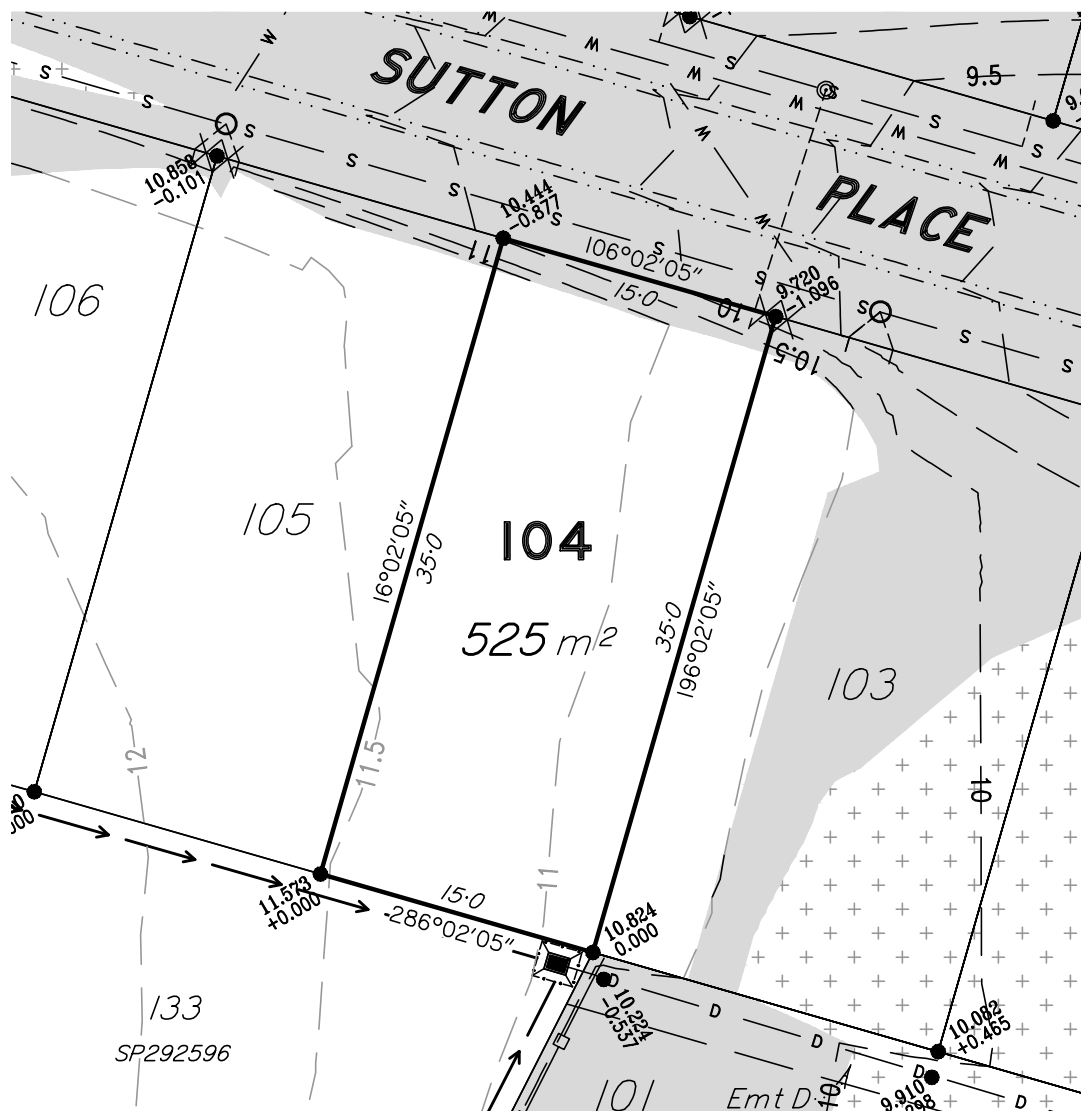
ISSUE:

A

Date

03/08/2021 Ref. 6622DP-103

STAGE 5

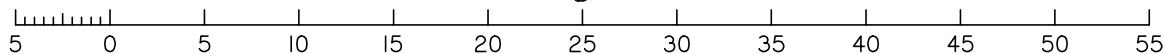


LEGEND

- 18 — Design Contours
- [Hatched Box] Area of Cut
- [Box with +] Area of Fill
- + = Amount of Fill
- = Amount of Cut
- FSL = Design Surface Level
- [Symbol] Batter/Bank
- [Symbol] Retaining Wall
- [Symbol] Sewer Main
- [Symbol] Sewer Manhole
- [Symbol] Sewer Connection
- [Symbol] Stormwater Main
- [Symbol] Roofwater Pipe
- [Symbol] Stormwater Manhole
- [Symbol] Stormwater Gully Pit
- [Symbol] Roofwater Pit
- [Symbol] RW Kerb Adaptor
- [Symbol] Water Reticulation
- [Symbol] Water Meter Location

1. ALLOTMENTS MAY HAVE BEEN TRIMMED, RESHAPED AND TOPSOIL RESPREAD. ANY EARTHWORKS OR FILL ASSOCIATED WITH THOSE WORKS IS NOT SHOWN AND HAS NOT BEEN SUBJECT TO ENGINEERING COMPACTION REQUIREMENTS. IT IS ANTICIPATED THE DEPTH OF SUCH WORKS WOULD NOT EXCEED 450mm, HOWEVER, ISOLATED AREAS GREATER THAN THAT DEPTH MAY OCCUR.
2. IT IS THE PURCHASER'S RESPONSIBILITY TO ARRANGE THEIR OWN INDEPENDENT GEOTECHNICAL TESTING ON ANY ALLOTMENT TO DETERMINE FOUNDATION REQUIREMENTS PRIOR TO CONSTRUCTION.
3. IT IS THE PURCHASER'S RESPONSIBILITY TO OBTAIN THE ACCURATE LOCATION OF SERVICES FROM THE LOCAL AUTHORITY.
4. THE DIMENSIONS AND AREAS SHOWN ON THIS PLAN ARE SUBJECT TO FINAL COUNCIL SEALING APPROVAL AND REGISTRATION IN THE DEPARTMENT OF NATURAL RESOURCES AND MINES.
5. EARTHWORKS FILL ON THE SUBJECT ALLOTMENT WILL BE UNDERTAKEN AND COMPACTED IN ACCORDANCE WITH THE PROVISIONS OF AS3798-2007 TABLES 5.1 AND 8.1 UNDER LEVEL 1 SUPERVISION.
6. FUTURE LOTS ARE INDICATIVE ONLY AND ARE SUBJECT TO CHANGE AT THE DEVELOPER'S ABSOLUTE DISCRETION.

Scale 1:400 – Lengths are in Metres.



NOTE:

The dimensions and areas shown hereon are subject to field survey and also to the requirements of Council and any other authority which may have requirements under any relevant legislation.
Contour Interval 0.5 Metres.
See draft plan SP330675 for more information.
Refer to Planning & Environment Court Approval 2885/2014 dated 28th November 2014 for full details.
Operational Works Approvals A004467836 for Earthworks dated 12 October 2016 and A004467853 for Roadworks & Drainage dated 12 October 2016.
This note is an integral part of this plan.

DISCLOSURE PLAN

Description

PROPOSED LOT 104
LOT 999 on SP292596
LAND AT 1701-1825 CREEK ROAD
CANNON HILL
BRISBANE CITY COUNCIL

Scale in Metres.

1:400 at A4

Norris Clarke & O'Brien Pty Ltd



Licensed Surveyors
Town Planners
Development Consultants

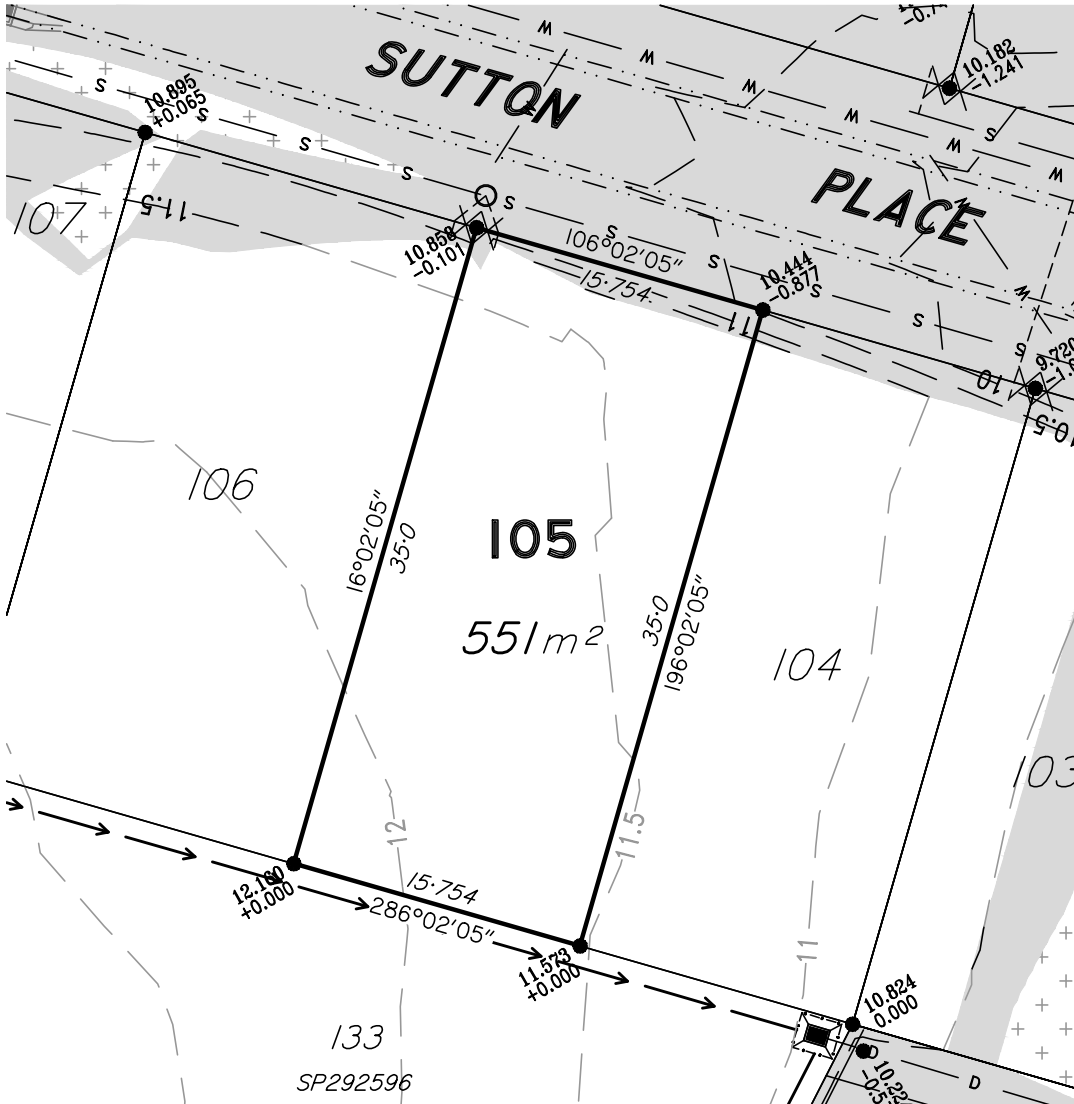
Level 1 - Aldi Centre, 12 Bishop Street
Kelvin Grove QLD 4059
ph: 07 3012 0000 fax: 07 3012 0099
email: info@nccb.com.au
ACN 056 870 770 ABN 15 056 870 770

COMP.FILE
6622DP_S5.DWG

ISSUE:
A

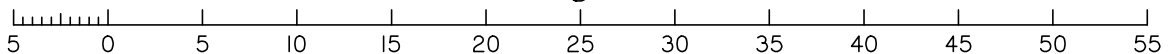
Date 03/08/2021 Ref. 6622DP-104

STAGE 5



1. ALLOTMENTS MAY HAVE BEEN TRIMMED, RESHAPED AND TOPSOIL RESPREAD. ANY EARTHWORKS OR FILL ASSOCIATED WITH THOSE WORKS IS NOT SHOWN AND HAS NOT BEEN SUBJECT TO ENGINEERING COMPACTION REQUIREMENTS. IT IS ANTICIPATED THE DEPTH OF SUCH WORKS WOULD NOT EXCEED 450mm, HOWEVER, ISOLATED AREAS GREATER THAN THAT DEPTH MAY OCCUR.
2. IT IS THE PURCHASER'S RESPONSIBILITY TO ARRANGE THEIR OWN INDEPENDENT GEOTECHNICAL TESTING ON ANY ALLOTMENT TO DETERMINE FOUNDATION REQUIREMENTS PRIOR TO CONSTRUCTION.
3. IT IS THE PURCHASER'S RESPONSIBILITY TO OBTAIN THE ACCURATE LOCATION OF SERVICES FROM THE LOCAL AUTHORITY.
4. THE DIMENSIONS AND AREAS SHOWN ON THIS PLAN ARE SUBJECT TO FINAL COUNCIL SEALING APPROVAL AND REGISTRATION IN THE DEPARTMENT OF NATURAL RESOURCES AND MINES.
5. EARTHWORKS FILL ON THE SUBJECT ALLOTMENT WILL BE UNDERTAKEN AND COMPACTED IN ACCORDANCE WITH THE PROVISIONS OF AS3798-2007 TABLES 5.1 AND 8.1 UNDER LEVEL 1 SUPERVISION.
6. FUTURE LOTS ARE INDICATIVE ONLY AND ARE SUBJECT TO CHANGE AT THE DEVELOPER'S ABSOLUTE DISCRETION.

Scale 1:400 – Lengths are in Metres.



NOTE:

The dimensions and areas shown hereon are subject to field survey and also to the requirements of Council and any other authority which may have requirements under any relevant legislation.
Contour Interval 0.5 Metres.
See draft plan SP330675 for more information.
Refer to Planning & Environment Court Approval 2885/2014 dated 28th November 2014 for full details.
Operational Works Approvals A004467836 for Earthworks dated 12 October 2016 and A004467853 for Roadworks & Drainage dated 12 October 2016.
This note is an integral part of this plan.

DISCLOSURE PLAN

Description

PROPOSED LOT 105
LOT 999 on SP292596
LAND AT 1701-1825 CREEK ROAD
CANNON HILL
BRISBANE CITY COUNCIL

Scale in Metres.

1:400 at A4

Norris Clarke & O'Brien Pty Ltd



Licensed Surveyors
Town Planners
Development Consultants

Level 1 - Aldi Centre, 12 Bishop Street
Kelvin Grove QLD 4059
ph: 07 3012 0000 fax: 07 3012 0099
email: info@nccb.com.au
ACN 056 870 770 ABN 15 056 870 770

COMP.FILE

6622DP_S5.DWG

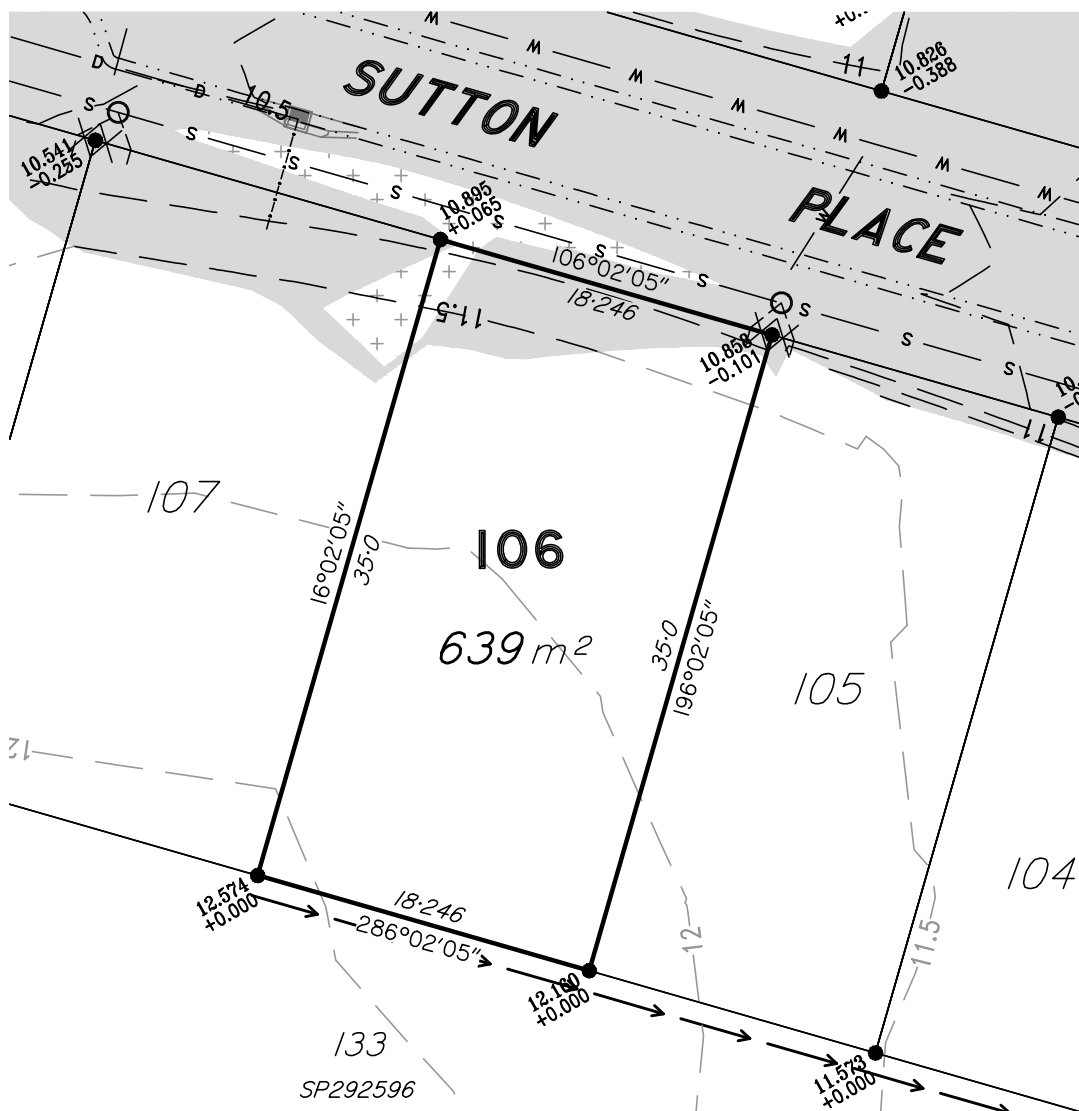
ISSUE:

A

Date

03/08/2021 Ref. 6622DP-105

STAGE 5

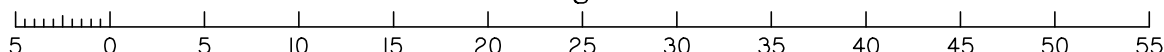


LEGEND

- 18 — Design Contours
- Area of Cut
- Area of Fill
- + = Amount of Fill
- = Amount of Cut
- FSL = Design Surface Level
- Batter/Bank
- Retaining Wall
- Sewer Main
- Sewer Manhole
- Sewer Connection
- Stormwater Main
- Roofwater Pipe
- Stormwater Manhole
- Stormwater Gully Pit
- Roofwater Pit
- RW Kerb Adaptor
- Water Reticulation
- Water Meter Location

1. ALLOTMENTS MAY HAVE BEEN TRIMMED, RESHAPED AND TOPSOIL RESPREAD. ANY EARTHWORKS OR FILL ASSOCIATED WITH THOSE WORKS IS NOT SHOWN AND HAS NOT BEEN SUBJECT TO ENGINEERING COMPACTION REQUIREMENTS. IT IS ANTICIPATED THE DEPTH OF SUCH WORKS WOULD NOT EXCEED 450mm, HOWEVER, ISOLATED AREAS GREATER THAN THAT DEPTH MAY OCCUR.
2. IT IS THE PURCHASER'S RESPONSIBILITY TO ARRANGE THEIR OWN INDEPENDENT GEOTECHNICAL TESTING ON ANY ALLOTMENT TO DETERMINE FOUNDATION REQUIREMENTS PRIOR TO CONSTRUCTION.
3. IT IS THE PURCHASER'S RESPONSIBILITY TO OBTAIN THE ACCURATE LOCATION OF SERVICES FROM THE LOCAL AUTHORITY.
4. THE DIMENSIONS AND AREAS SHOWN ON THIS PLAN ARE SUBJECT TO FINAL COUNCIL SEALING APPROVAL AND REGISTRATION IN THE DEPARTMENT OF NATURAL RESOURCES AND MINES.
5. EARTHWORKS FILL ON THE SUBJECT ALLOTMENT WILL BE UNDERTAKEN AND COMPACTED IN ACCORDANCE WITH THE PROVISIONS OF AS3798-2007 TABLES 5.1 AND 8.1 UNDER LEVEL 1 SUPERVISION.
6. FUTURE LOTS ARE INDICATIVE ONLY AND ARE SUBJECT TO CHANGE AT THE DEVELOPER'S ABSOLUTE DISCRETION.

Scale 1:400 – Lengths are in Metres.



NOTE:

The dimensions and areas shown hereon are subject to field survey and also to the requirements of Council and any other authority which may have requirements under any relevant legislation.
Contour Interval 0.5 Metres.
See draft plan SP330675 for more information.
Refer to Planning & Environment Court Approval 2885/2014 dated 28th November 2014 for full details.
Operational Works Approvals A004467836 for Earthworks dated 12 October 2016 and A004467853 for Roadworks & Drainage dated 12 October 2016.
This note is an integral part of this plan.

DISCLOSURE PLAN

Description

PROPOSED LOT 106
LOT 999 on SP292596
LAND AT 1701-1825 CREEK ROAD
CANNON HILL
BRISBANE CITY COUNCIL

Scale in Metres.

1:400 at A4

Norris Clarke & O'Brien Pty Ltd



Licensed Surveyors
Town Planners
Development Consultants

Level 1 - Aldi Centre, 12 Bishop Street
Kelvin Grove QLD 4059
ph: 07 3012 0000 fax: 07 3012 0099
email: info@ncob.com.au
ACN 056 870 770 ABN 15 056 870 770

COMP.FILE

6622DP_S5.DWG

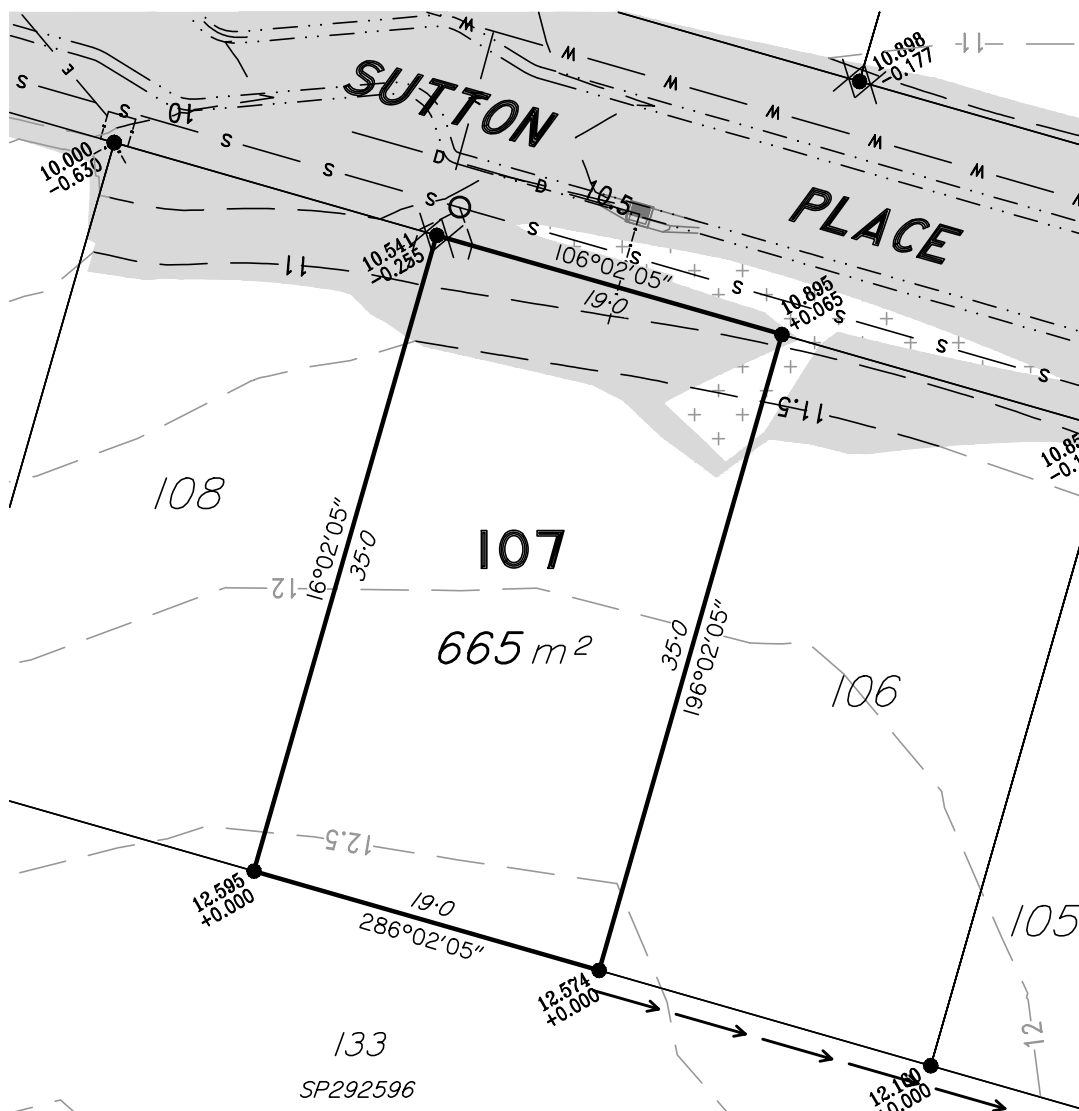
ISSUE:

A

Date

03/08/2021 Ref. 6622DP-106

STAGE 5

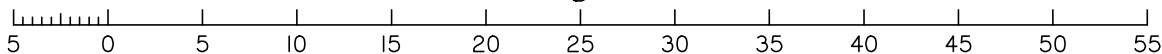


LEGEND

- 18 — Design Contours
- Area of Cut
- Area of Fill
- + = Amount of Fill
- = Amount of Cut
FSL = Design Surface Level
- Batter/Bank
- Retaining Wall
- Sewer Main
- Sewer Manhole
- Sewer Connection
- Stormwater Main
- Roofwater Pipe
- Stormwater Manhole
- Stormwater Gully Pit
- Roofwater Pit
- RW Kerb Adaptor
- Water Reticulation
- Water Meter Location

1. ALLOTMENTS MAY HAVE BEEN TRIMMED, RESHAPED AND TOPSOIL RESPREAD. ANY EARTHWORKS OR FILL ASSOCIATED WITH THOSE WORKS IS NOT SHOWN AND HAS NOT BEEN SUBJECT TO ENGINEERING COMPACTION REQUIREMENTS. IT IS ANTICIPATED THE DEPTH OF SUCH WORKS WOULD NOT EXCEED 450mm, HOWEVER, ISOLATED AREAS GREATER THAN THAT DEPTH MAY OCCUR.
2. IT IS THE PURCHASER'S RESPONSIBILITY TO ARRANGE THEIR OWN INDEPENDENT GEOTECHNICAL TESTING ON ANY ALLOTMENT TO DETERMINE FOUNDATION REQUIREMENTS PRIOR TO CONSTRUCTION.
3. IT IS THE PURCHASER'S RESPONSIBILITY TO OBTAIN THE ACCURATE LOCATION OF SERVICES FROM THE LOCAL AUTHORITY.
4. THE DIMENSIONS AND AREAS SHOWN ON THIS PLAN ARE SUBJECT TO FINAL COUNCIL SEALING APPROVAL AND REGISTRATION IN THE DEPARTMENT OF NATURAL RESOURCES AND MINES.
5. EARTHWORKS FILL ON THE SUBJECT ALLOTMENT WILL BE UNDERTAKEN AND COMPACTED IN ACCORDANCE WITH THE PROVISIONS OF AS3798-2007 TABLES 5.1 AND 8.1 UNDER LEVEL 1 SUPERVISION.
6. FUTURE LOTS ARE INDICATIVE ONLY AND ARE SUBJECT TO CHANGE AT THE DEVELOPER'S ABSOLUTE DISCRETION.

Scale 1:400 – Lengths are in Metres.



NOTE:

The dimensions and areas shown hereon are subject to field survey and also to the requirements of Council and any other authority which may have requirements under any relevant legislation.
Contour Interval 0.5 Metres.
See draft plan SP330675 for more information.
Refer to Planning & Environment Court Approval 2885/2014 dated 28th November 2014 for full details.
Operational Works Approvals A004467836 for Earthworks dated 12 October 2016 and A004467853 for Roadworks & Drainage dated 12 October 2016.
This note is an integral part of this plan.

DISCLOSURE PLAN

Description

PROPOSED LOT 107
LOT 999 on SP292596
LAND AT 1701-1825 CREEK ROAD
CANNON HILL
BRISBANE CITY COUNCIL

Scale in Metres.

1:400 at A4

Norris Clarke & O'Brien Pty Ltd



Licensed Surveyors
Town Planners
Development Consultants

Level 1 - Aldi Centre, 12 Bishop Street
Kelvin Grove QLD 4059
ph: 07 3012 0000 fax: 07 3012 0099
email: info@nccb.com.au
ACN 056 870 770 ABN 15 056 870 770

COMP.FILE

6622DP_S5.DWG

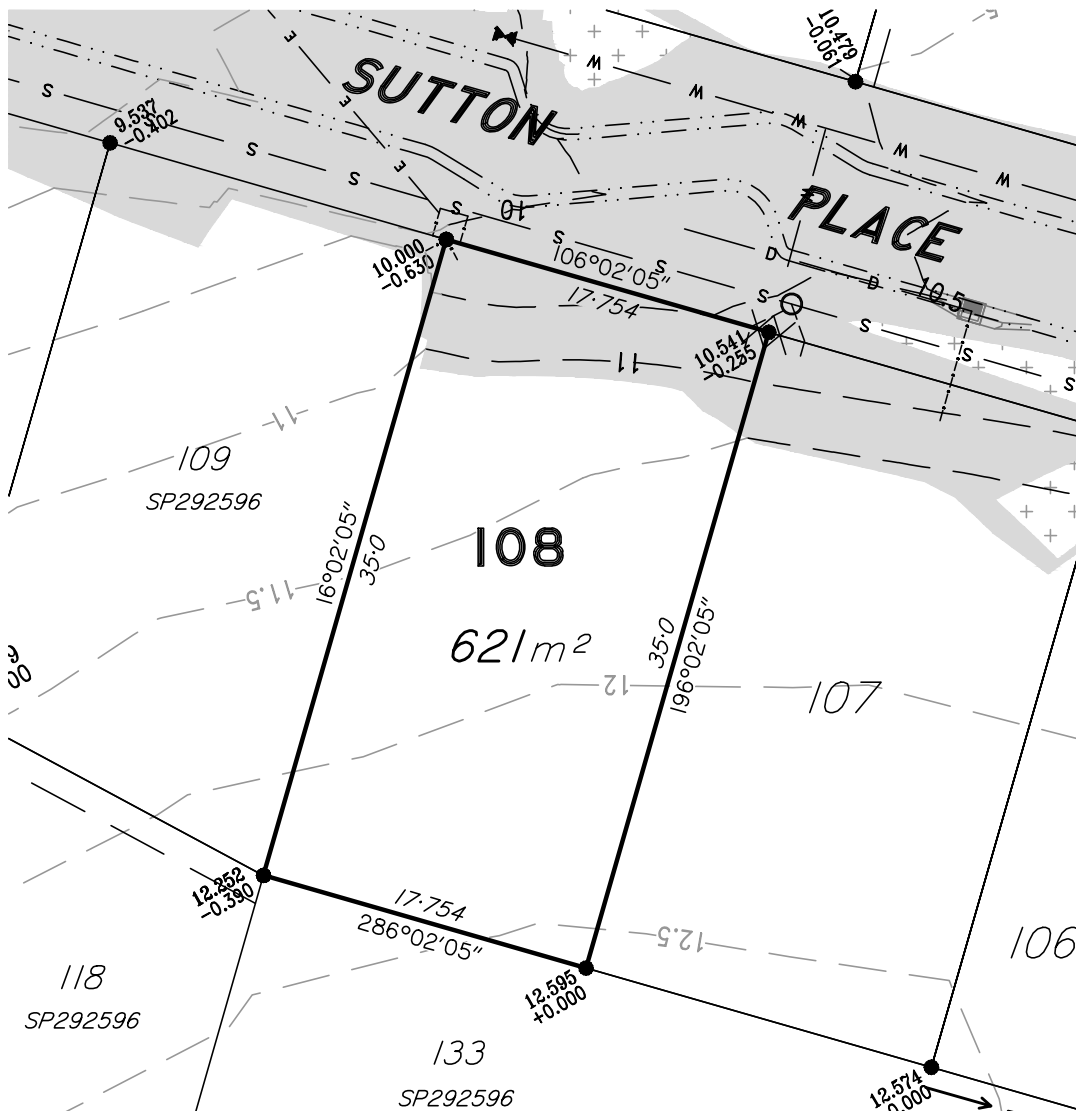
ISSUE:

A

Date

03/08/2021 Ref. 6622DP-107

STAGE 5

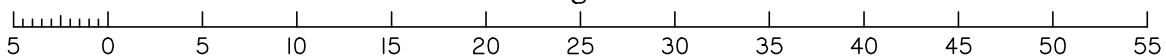


LEGEND

- 18 — Design Contours
- [Shaded Area] Area of Cut
- [Cross-hatched Area] Area of Fill
- + = Amount of Fill
- = Amount of Cut
- FSL = Design Surface Level
- [Symbol] Batter/Bank
- [Symbol] Retaining Wall
- [Symbol] Sewer Main
- [Symbol] Sewer Manhole
- [Symbol] Sewer Connection
- [Symbol] Stormwater Main
- [Symbol] Roofwater Pipe
- [Symbol] Stormwater Manhole
- [Symbol] Stormwater Gully Pit
- [Symbol] Roofwater Pit
- [Symbol] RW Kerb Adaptor
- [Symbol] Water Reticulation
- [Symbol] Water Meter Location

1. ALLOTMENTS MAY HAVE BEEN TRIMMED, RESHAPED AND TOPSOIL RESPREAD. ANY EARTHWORKS OR FILL ASSOCIATED WITH THOSE WORKS IS NOT SHOWN AND HAS NOT BEEN SUBJECT TO ENGINEERING COMPACTION REQUIREMENTS. IT IS ANTICIPATED THE DEPTH OF SUCH WORKS WOULD NOT EXCEED 450mm, HOWEVER, ISOLATED AREAS GREATER THAN THAT DEPTH MAY OCCUR.
2. IT IS THE PURCHASER'S RESPONSIBILITY TO ARRANGE THEIR OWN INDEPENDENT GEOTECHNICAL TESTING ON ANY ALLOTMENT TO DETERMINE FOUNDATION REQUIREMENTS PRIOR TO CONSTRUCTION.
3. IT IS THE PURCHASER'S RESPONSIBILITY TO OBTAIN THE ACCURATE LOCATION OF SERVICES FROM THE LOCAL AUTHORITY.
4. THE DIMENSIONS AND AREAS SHOWN ON THIS PLAN ARE SUBJECT TO FINAL COUNCIL SEALING APPROVAL AND REGISTRATION IN THE DEPARTMENT OF NATURAL RESOURCES AND MINES.
5. EARTHWORKS FILL ON THE SUBJECT ALLOTMENT WILL BE UNDERTAKEN AND COMPACTED IN ACCORDANCE WITH THE PROVISIONS OF AS3798-2007 TABLES 5.1 AND 8.1 UNDER LEVEL 1 SUPERVISION.
6. FUTURE LOTS ARE INDICATIVE ONLY AND ARE SUBJECT TO CHANGE AT THE DEVELOPER'S ABSOLUTE DISCRETION.

Scale 1:400 – Lengths are in Metres.



NOTE:

The dimensions and areas shown hereon are subject to field survey and also to the requirements of Council and any other authority which may have requirements under any relevant legislation.
Contour Interval 0.5 Metres.
See draft plan SP330675 for more information.
Refer to Planning & Environment Court Approval 2885/2014 dated 28th November 2014 for full details.
Operational Works Approvals A004467836 for Earthworks dated 12 October 2016 and A004467853 for Roadworks & Drainage dated 12 October 2016.
This note is an integral part of this plan.

DISCLOSURE PLAN

Description

PROPOSED LOT 108
LOT 999 on SP292596
LAND AT 1701-1825 CREEK ROAD
CANNON HILL
BRISBANE CITY COUNCIL

Scale in Metres.

1:400 at A4

Norris Clarke & O'Brien Pty Ltd



Licensed Surveyors
Town Planners
Development Consultants

Level 1 - Aldi Centre, 12 Bishop Street
Kelvin Grove QLD 4059
ph: 07 3012 0000 fax: 07 3012 0099
email: info@ncob.com.au
ACN 056 870 770 ABN 15 056 870 770

COMP.FILE
6622DP_S5.DWG

ISSUE:
A

Date 03/08/2021 Ref. 6622DP-108